

# pilot unloading screw-in valve

PUV3-10.-.-0-..

**MP-810-100-00**

(subject to change)

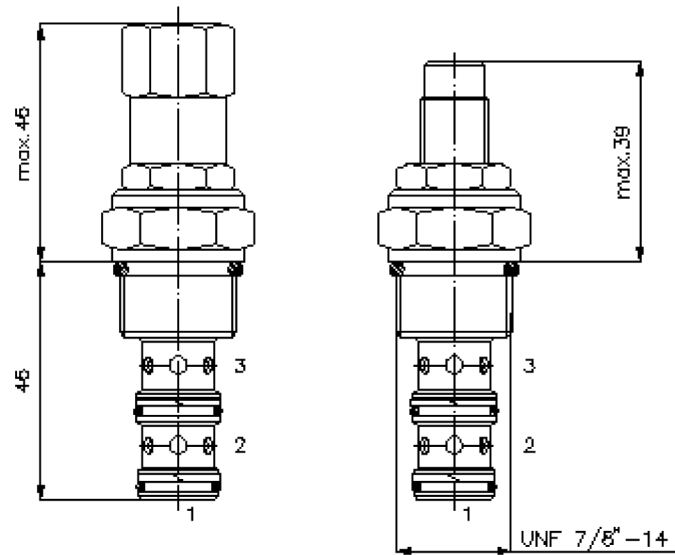
**FAT-N**



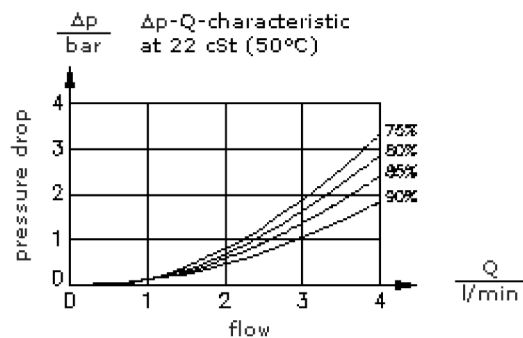
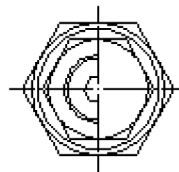
HEX 3/4"

HEX 1"  
(torque  
cartridge:  
48 - 54 Nm)

cavity:  
C-10-3  
see  
data-sheet no.:  
[IK-300-109-00](#)



HEX 3/16"



# pilot unloading screw-in valve

PUV3-10.-.-0-..



Motrac Hydraulik GmbH  
Siemensring 87 - D-47877 Willich  
fon +49-(0)2154-8162.0 - fax +49-(0)2154-8162.499  
e-mail info.miw@motracindustries.com  
internet www.motracindustries.com

MP-810-100-00

(subject to change)

## Ordering example:

PUV3 - 10N - C - 0 - 85 - 30  
|        |        |        |        |        |  
**A**    **B**    **C**    **D**    **E**    **F**

## Model code:

- |   |   |
|---|---|
| <b>A</b> <b>design</b><br>pilot operated pressure sequence valve          | <b>E</b> <b>switching pressure difference</b><br>75 = 75%<br>80 = 80%<br>85 = 85%<br>90 = 90% |
| <b>B</b> <b>size and sealing</b><br>10N = Buna (NBR)<br>10V = Viton (FPM) | <b>F</b> <b>pressure range</b><br>15 = 20.0 - 100 bar<br>30 = 100.0 - 210 bar                 |
| <b>C</b> <b>adjustment</b><br>S = screw adjustment<br>C = cap             |   |
| <b>D</b> <b>construction</b><br>0 = screw-in valve                        |   |

## Technical Data:

<b>nominal pressure:</b>	210 bar
<b>nominal flow:</b>	4 l/min
<b>weight:</b>	0.15 kg
<b>temperature range:</b>	-40°C to 120°C
<b>fluids:</b>	hydraulic oil as per DIN 51524 T1 (ISO TC 131)
<b>seals:</b>	optional Buna (NBR) or Viton (FPM), as well as Teflon wascher (PTFE)
<b>cavity:</b>	C-10-3 see datasheet no. <a href="#">IK-300-109-00</a>
<b>housing:</b>	3LH-10.-B.. see datasheet no. <a href="#">IH-300-000-00</a>
<b>seal kit:</b>	SP-MDS-10N-32 (NBR), SP-MDS-10V-32 (FPM)