

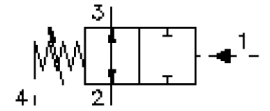
pressure sequence srew-in valve (direct acting, adjustable)

PSV8-10.-.-0-..

MP-710-100-00

(subject to change)

FAT-N



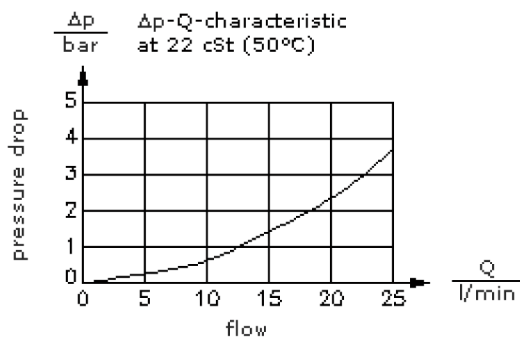
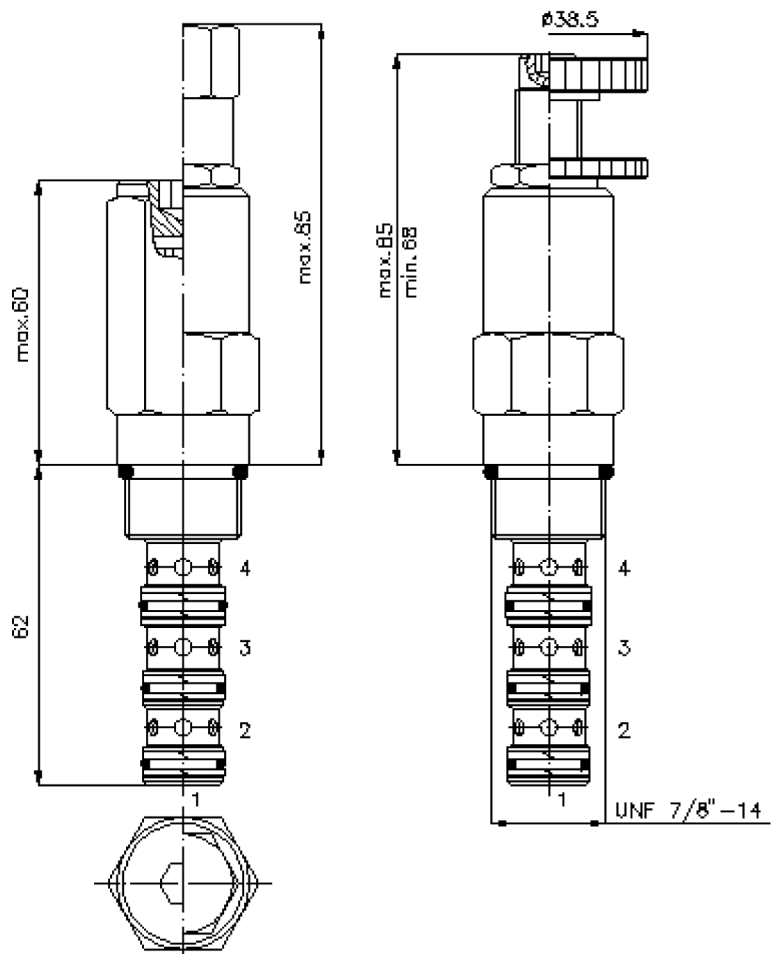
HEX 3/4"

HEX 1"
(torque
cartridge:
48 - 54 Nm)

cavity:
C-10-4
see
data-sheet no.:
[IK-400-109-00](#)

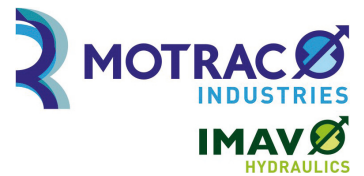
HEX 5/16" ("J")
(HEX 1/4")

HEX 3/16" ("S")



pressure sequence screw-in valve (direct acting, adjustable)

PSV8-10.-.-0-..



Motrac Hydraulik GmbH
Siemensring 87 - D-47877 Willich
fon +49-(0)2154-8162.0 - fax +49-(0)2154-8162.499
e-mail info.miw@motracindustries.com
internet www.motracindustries.com

FAT•N

MP-710-100-00

(subject to change)

Ordering example:

PSV8 - 10N - C - 0 - 12
| | | | |
A **B** **C** **D** **E**

Model code:

- A design**
pressure-sequence-valve
spool type valve
direct acting
- B size and sealing**
10N = Buna (NBR)
10V = Viton (FPM)
- C adjustment**
J = internal
S = screw adjustment
C = cap
K = handknob

- D construction**
0 = screw-in valve
- E pressure range**
02 = 3.5 - 14 bar
04 = 5.0 - 28 bar
06 = 7.0 - 40 bar
12 = 14.0 - 80 bar
24 = 28.0 - 165 bar

Technical Data:

note:	max. load of 165 bar at port "1"
nominal pressure:	210 bar
nominal flow:	23 l/min
weight:	0.27 kg
temperature range:	-40°C to 120°C
fluids:	hydraulic oil as per DIN 51524 T1 (ISO TC 131)
seals:	optional Buna (NBR) or Viton (FPM), as well as Teflon wascher (PTFE)
cavity:	C-10-4 see datasheet no. IK-400-109-00 Review note!
housing:	4LH-10.-B.. see datasheet no. IH-400-000-00
seal kit:	SP-MDS-10N-46 (NBR), SP-MDS-10V-46 (FPM)