

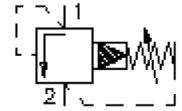
# pressure relief valve, screw-in type (pilot operated, adjustable)

RV5-10.-.-0-..

**MP-170-101-00**

(subject to change)

**FAT-N**



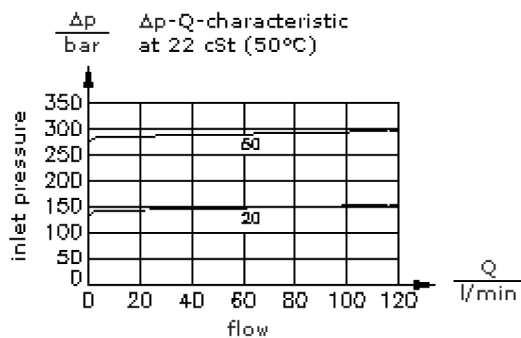
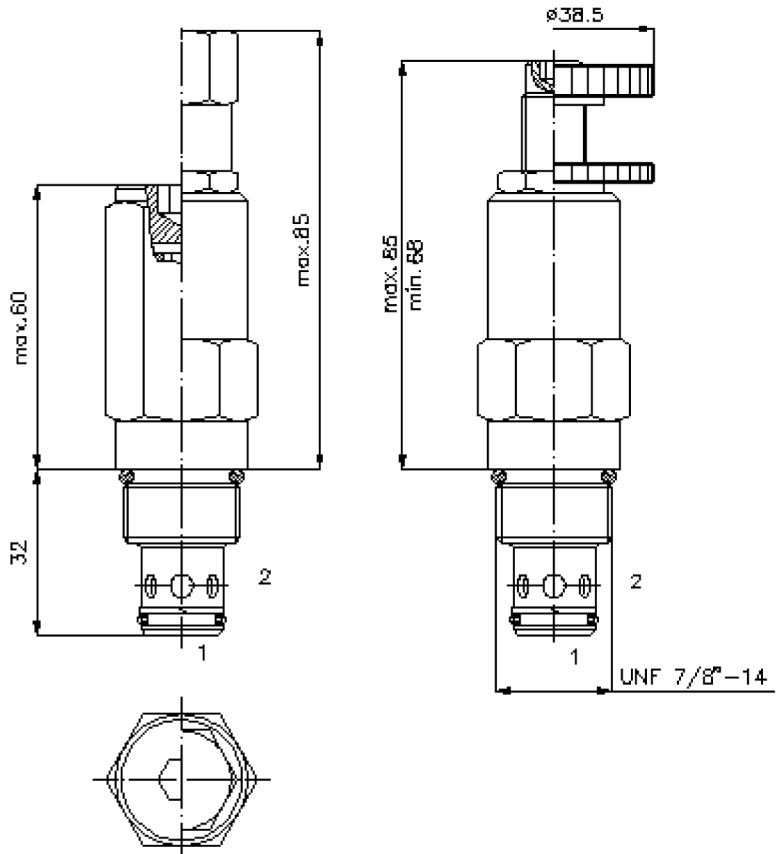
HEX 3/4"

HEX 1"  
(torque  
cartridge:  
48 - 54 Nm)

Attention:  
Please see note at  
data-sheet no.:  
IK-100-109-00 !

HEX 5/16" ("J")  
(HEX 1/4")

HEX 3/16" ("S")



# pressure relief valve, screw-in type (pilot operated, adjustable)

RV5-10.-.-0-..



Motrac Hydraulik GmbH  
Siemensring 87 - D-47877 Willich  
fon +49-(0)2154-8162.0 - fax +49-(0)2154-8162.499  
e-mail info.miw@motracindustries.com  
internet www.motracindustries.com

FAT•N

MP-170-101-00

(subject to change)

## Ordering example:

RV5 - 10N - C - 0 - 20  
|        |        |        |        |  
**A**    **B**    **C**    **D**    **E**

## Model code:

- A design**  
relief-valve  
spool type valve  
pilot operated
- B size and sealing**  
10N = Buna (NBR)  
10V = Viton (FPM)
- C adjustment**  
S = screw adjustment  
J = internal  
C = cap  
K = handknob

- D construction**  
0 = screw-in valve
- E pressure range**  
03 = 3.4 - 20 bar  
20 = 7.0 - 140 bar  
35 = 17.0 - 240 bar  
50 = 35.0 - 350 bar

## Technical Data:

<b>nominal pressure:</b>	350 bar
<b>nominal flow:</b>	114 l/min
<b>weight:</b>	0.22 kg
<b>temperature range:</b>	-40°C to 120°C
<b>fluids:</b>	hydraulic oil as per DIN 51524 T1 (ISO TC 131)
<b>max. leakage:</b>	131 ccm/min at 22 cSt (50°C) and 350 bar
<b>seals:</b>	optional Buna (NBR) or Viton (FPM), as well as Teflon wascher (PTFE)
<b>cavity:</b>	C-10-2 see datasheet no. <a href="#">IK-100-109-00</a>
<b>housing:</b>	2LH-10.-B.. see datasheet no. <a href="#">IH-100-000-00</a>
<b>seal kit:</b>	SP-MDS-10N-21 (NBR), SP-MDS-10V-21 (FPM)