

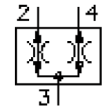
flow divider/combiner screw-in valve (with positive traction)

FDC3-16.-0-..

MF-850-160-00

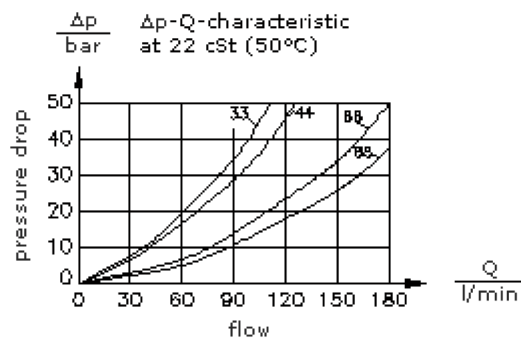
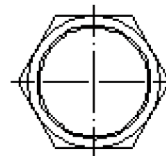
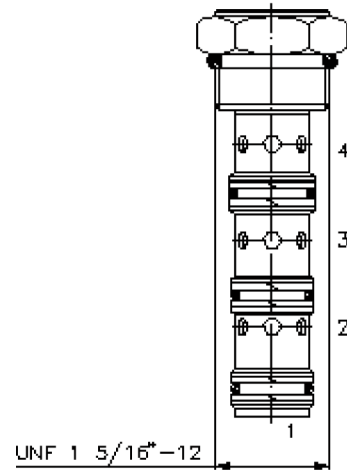
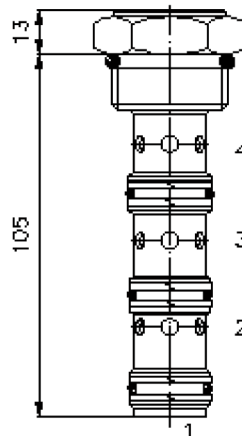
(subject to change)

FAT•N



HEX 1 1/2"
(torque
cartridge:
109 - 122 Nm)

cavity:
C-16-4
see
data-sheet no.:
IK-400-169-00



flow divider/combiner screw-in valve (with positive traction)

FDC3-16.-0-..



Motrac Hydraulik GmbH
Siemensring 87 - D-47877 Willich
fon +49-(0)2154-8162.0 - fax +49-(0)2154-8162.499
e-mail info.miw@motracindustries.com
internet www.motracindustries.com

MF-850-160-00

(subject to change)

FAT•N

Ordering example:

FDC3 - 16N - 0 - 66
| | | |
A **B** **C** **D**

Model code:

- A design**
flow divider/combiner
- B size and sealing**
16N = Buna (NBR)
16V = Viton (FPM)
- C construction**
0 = screw-in valve

- D flow and dividing ratio**
port
2 ; 4 ; 3 (Q max.)
33 = 50.0% ; 50.0% ; 76 l/min
44 = 50.0% ; 50.0% ; 107 l/min
66 = 50.0% ; 50.0% ; 152 l/min
88 = 50.0% ; 50.0% ; 228 l/min

Technical Data:

nominal pressure:	210 bar
nominal flow:	228 l/min
weight:	0.35 kg
temperature range:	-40°C to 120°C
fluids:	hydraulic oil as per DIN 51524 T1 (ISO TC 131)
seals:	optional Buna (NBR) or Viton (FPM), as well as Teflon wascher (PTFE)
flow divisions (ratio):	± 10% of nominal range
cavity:	C-16-4 see datasheet no. IK-400-169-00
housing:	4LHS-16.-B.. see datasheet no. IH-500-000-00
seal kit:	SP-MDS-16N-46 (NBR), SP-MDS-16V-46 (FPM)