

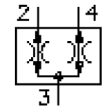
flow divider/combiner screw-in valve

FDC1-10.-0-..

Motrac Hydraulik GmbH
 Siemensring 87 - D-47877 Willich
 fon +49-(0)2154-8162.0 - fax +49-(0)2154-8162.499
 e-mail info.miw@motracindustries.com
 internet www.motracindustries.com

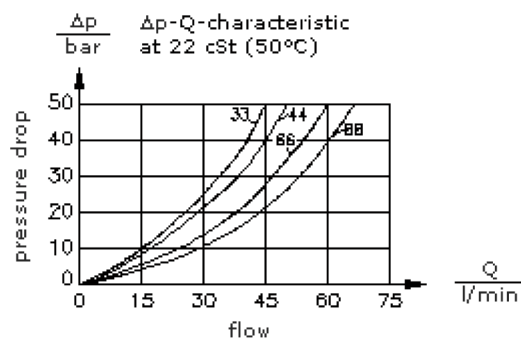
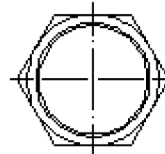
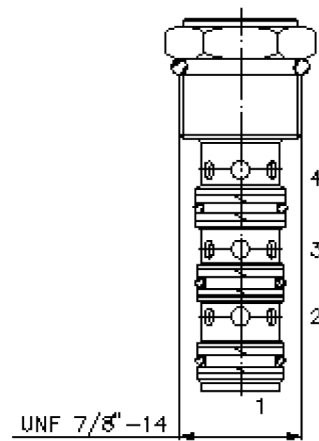
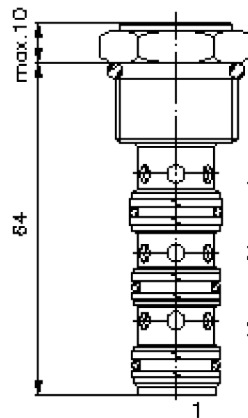
MF-810-100-00

(subject to change)



HEX 1"
 (torque
 cartridge:
 48 - 54 Nm)

cavity: C-10-4
 see
 data-sheet no.:
[IK-400-109-00](#)



flow divider/combiner screw-in valve

FDC1-10.-0-..



Motrac Hydraulik GmbH
Siemensring 87 - D-47877 Willich
fon +49-(0)2154-8162.0 - fax +49-(0)2154-8162.499
e-mail info.miw@motracindustries.com
internet www.motracindustries.com

FAT•N

MF-810-100-00

(subject to change)

Ordering example:

FDC1 - 10N - 0 - 33
| | | |
A **B** **C** **D**

Model code:

- A** design
flow divider/combiner
- B** size and sealing
10N = Buna (NBR)
10V = Viton (FPM)
- C** construction
0 = screw-in valve

- D** flow and dividing ratio
port
2 ; 4 ; 3 (Q max.)
0505 = 50.0% ; 50.0% ; 4 l/min
11 = 50.0% ; 50.0% ; 8 l/min
22 = 50.0% ; 50.0% ; 15 l/min
33 = 50.0% ; 50.0% ; 23 l/min
44 = 50.0% ; 50.0% ; 30 l/min
66 = 50.0% ; 50.0% ; 45 l/min
88 = 50.0% ; 50.0% ; 61 l/min
64 = 60.0% ; 40.0% ; 38 l/min
46 = 40.0% ; 60.0% ; 38 l/min
63 = 66.7% ; 33.3% ; 34 l/min
36 = 33.3% ; 66.7% ; 34 l/min
43 = 56.7% ; 43.3% ; 27 l/min
34 = 43.3% ; 57.7% ; 27 l/min

Model code:

- A** design
flow divider/combiner
- B** size and sealing
10N = Buna (NBR)
10V = Viton (FPM)
- C** construction
0 = screw-in valve

- D** flow and dividing ratio
port
2 ; 4 ; 3 (Q max.)
0505 = 50.0% ; 50.0% ; 4 l/min
11 = 50.0% ; 50.0% ; 8 l/min
22 = 50.0% ; 50.0% ; 15 l/min
33 = 50.0% ; 50.0% ; 23 l/min
44 = 50.0% ; 50.0% ; 30 l/min
66 = 50.0% ; 50.0% ; 45 l/min
88 = 50.0% ; 50.0% ; 61 l/min
64 = 60.0% ; 40.0% ; 38 l/min
46 = 40.0% ; 60.0% ; 38 l/min
63 = 66.7% ; 33.3% ; 34 l/min
36 = 33.3% ; 66.7% ; 34 l/min
43 = 56.7% ; 43.3% ; 27 l/min
34 = 43.3% ; 57.7% ; 27 l/min