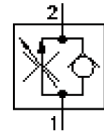


2-way flow control screw-in valve (adjustable)

FAR1-12.-C-0

MF-200-121-00

(subject to change)



HEX 1/8"

∅38.5

HEX 3/4"

max.75

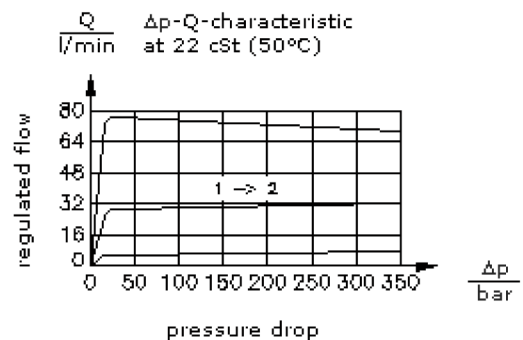
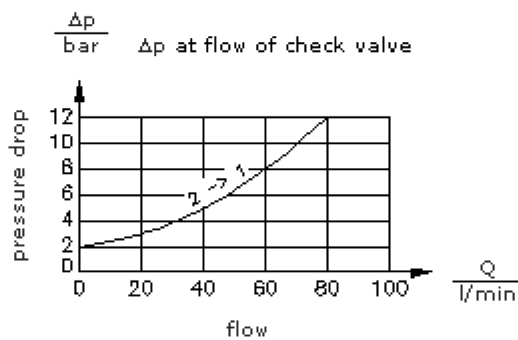
max.90

HEX 1 1/4"
(torque
cartridge:
85 - 94 Nm)

45

UNF 7/8"-14

cavity:
C-12-2
see
data-sheet no.:
[IK-100-129-00](#)



2-way flow control screw-in valve (adjustable)

FAR1-12.-C-0

MF-200-121-00

(subject to change)

FAT•N

Ordering example:

FAR1 - 12N - S - 0
| | | |
A **B** **C** **D**

Model code:

- | | |
|--|---|
| <p>A design
flow regulator valve
pressure independent</p> <p>B size and sealing
12N = Buna (NBR)
12V = Viton (FPM)</p> <p>C adjustment
S = screw adjustment
C = cap
K = handknob
H = calibrated handknob with locknut</p> | <p>D construction
0 = screw-in valve</p> |
|--|---|

Technical Data:

note:	left turn (counter clockwise) = increasing flow right turn (clockwise) = reducing flow
nominal pressure:	350 bar
nominal flow:	95 l/min
weight:	0.45 kg
inlet flow:	95 l/min
leakage:	closed valve 0.4 l/min at 22 cSt (50°C) at 210 bar
temperature range:	-40°C to 120°C
fluids:	hydraulic oil as per DIN 51524 T1 (ISO TC 131)
check valve:	crack pressure = 1.7 bar
Δp pressure compensator:	16 bar
regulation range:	1.5 - 95 l/min
regulation accuracy:	4.0 - 60 l/min ± 10%, 60 - 90 l/min ± 15%
seals:	optional Buna (NBR) or Viton (FPM), as well as Teflon wascher (PTFE)
cavity:	C-12-2 see datasheet no. IK-100-129-00
housing:	2LH-12.-B.. see datasheet no. IH-100-000-00
seal kit:	SP-MDS-12N-21(NBR), SP-MDS-12V-21 (FPM)