

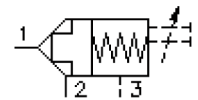
# 2 way, 2 position logic poppet valve type "T"

DPS2-20.-T.-0-...-..

MD-710-203-00

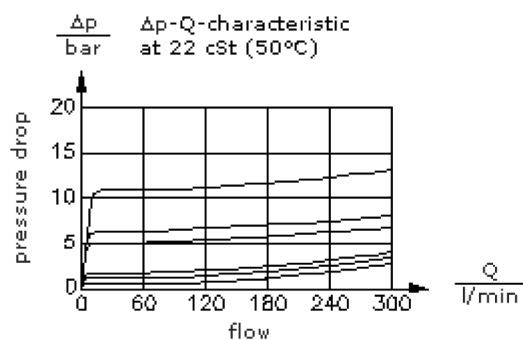
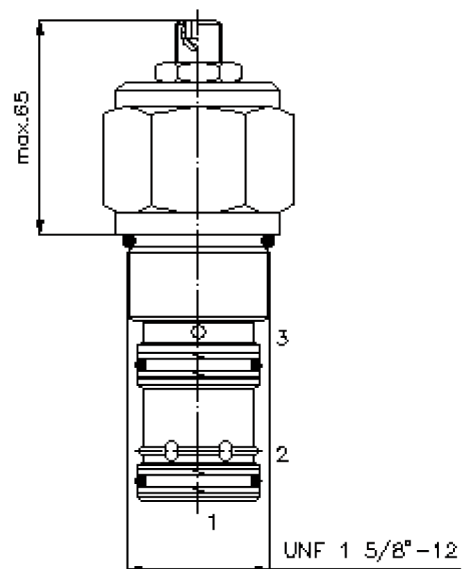
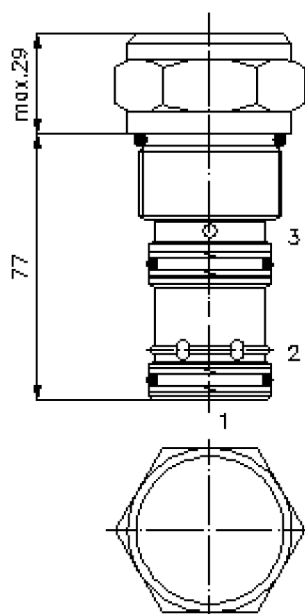
(subject to change)

FAT-N



HEX 1 7/8"  
(torque  
cartridge:  
129 - 155 Nm)

cavity:  
C-20-3S  
see  
data-sheet no.:  
[IK-200-209-00](#)



# 2 way, 2 position logic poppet valve type "T"

DPS2-20.-T-.0-....

MD-710-203-00

(subject to change)

FAT•N

## Ordering example:

DPS2 - 20N - T - F - 0 - 040 - AA

A	B	C	D	E	F	G

## Model code:

- |   |   |
|---|---|
| <p><b>A design</b><br/>logic valve</p> <p><b>B size and sealing</b><br/>20N = Buna (NBR)<br/>20V = Viton (FPM)</p> <p><b>C spool type</b><br/>T = bi-directional, pilot to close<br/>base position closed</p> <p><b>D adjustment</b><br/>F = fixed<br/>S = stroke limiter</p> | <p><b>E construction</b><br/>0 = screw-in valve</p> <p><b>F crack pressure</b><br/>040 = 2.8 bar<br/>080 = 5.5 bar<br/>160 = 11.0 bar</p> <p><b>G function mode</b><br/>00 = 210 bar variant<br/>AA = 350 bar variant</p> |
|---|---|

## Technical Data:

<b>nominal pressure:</b>	350 bar
<b>nominal flow:</b>	303 l/min
<b>weight:</b>	0.81 kg
<b>temperature range:</b>	-40°C to 120°C
<b>fluids:</b>	hydraulic oil as per DIN 51524 T1 (ISO TC 131)
<b>max. leakage:</b>	1 -> 2 = 5 drops/min at 22 cSt (50°) and 350 bar
<b>seals:</b>	optional Buna (NBR) or Viton (FPM), as well as Teflon wascher (PTFE)
<b>pilot ratio:</b>	2 : 1
<b>cavity:</b>	C-20-3S see datasheet no. <a href="#">IK-200-209-00</a>
<b>housing:</b>	3SLH-20.-B.. see datasheet no. <a href="#">IH-200-000-00</a>
<b>seal kit:</b>	SP-MDS-20N-34S (NBR), SP-MDS-20V-34S (FPM)