

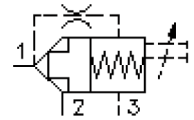
2 way, 2 position logic poppet valve type "B"

DPS2-16.-B-.-0-...-..

MD-710-161-00

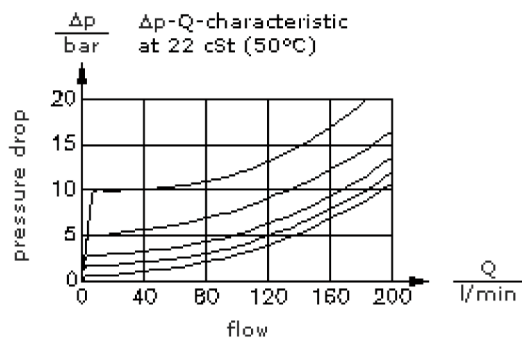
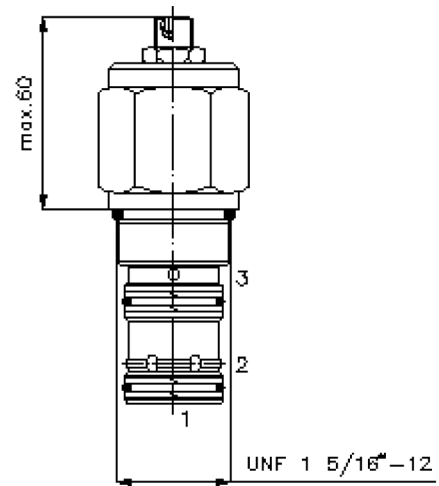
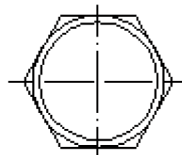
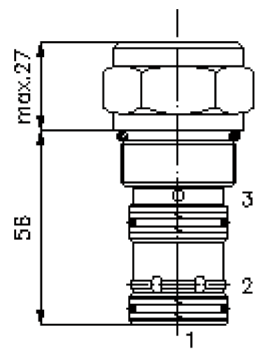
(subject to change)

FAT-N



HEX 1 1/2"
(torque
cartridge:
109 - 122 Nm)

cavity:
C-16-3S
see
data-sheet no.:
[IK-200-169-00](#)



2 way, 2 position logic poppet valve type "B"

DPS2-16.-B-.-0-...-



Motrac Hydraulik GmbH
Siemensring 87 - D-47877 Willich
fon +49-(0)2154-8162.0 - fax +49-(0)2154-8162.499
e-mail info.mhw@motracindustries.com
internet www.motracindustries.com

MD-710-161-00

(subject to change)

FAT•N

Ordering example:

DPS2 - 16N - B - F - 0 - 040 - FF

A	B	C	D	E	F	G

Model code:

- | | |
|--|---|
| <p>A design
logic valve</p> <p>B size and sealing
16N = Buna (NBR)
16V = Viton (FPM)</p> <p>C spool type
B = release to open
base position closed</p> <p>D adjustment
F = fixed
S = stroke limiter</p> | <p>E construction
0 = screw-in valve</p> <p>F crack pressure
040 = 2.8 bar
080 = 5.5 bar
160 = 11.0 bar</p> <p>G function mode
00 = 210 bar variant
AA = 350 bar variant</p> |
|--|---|

Technical Data:

nominal pressure:	350 bar
nominal flow:	189 l/min
weight:	0.35 kg
temperature range:	-40°C to 120°C
fluids:	hydraulic oil as per DIN 51524 T1 (ISO TC 131)
max. leakage:	1 -> 2 = 5 drops/min at 22 cSt (50°) and 350 bar
seals:	optional Buna (NBR) or Viton (FPM), as well as Teflon wascher (PTFE)
pilot ratio:	2 : 1
cavity:	C-16-3S see datasheet no. IK-200-169-00
housing:	3SLH-16.-B.. see datasheet no. IH-200-000-00
seal kit:	SP-MDS-16N-34S (NBR), SP-MDS-16V-34S (FPM)