

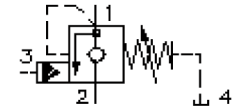
# counterbalance valve, screw-in type (vented spring)

VCB1-10.-.-0-.-..

MC-420-101-00

(subject to change)

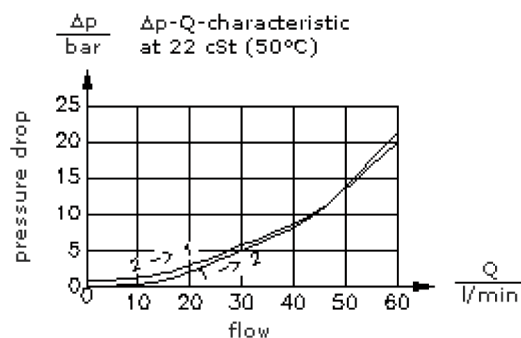
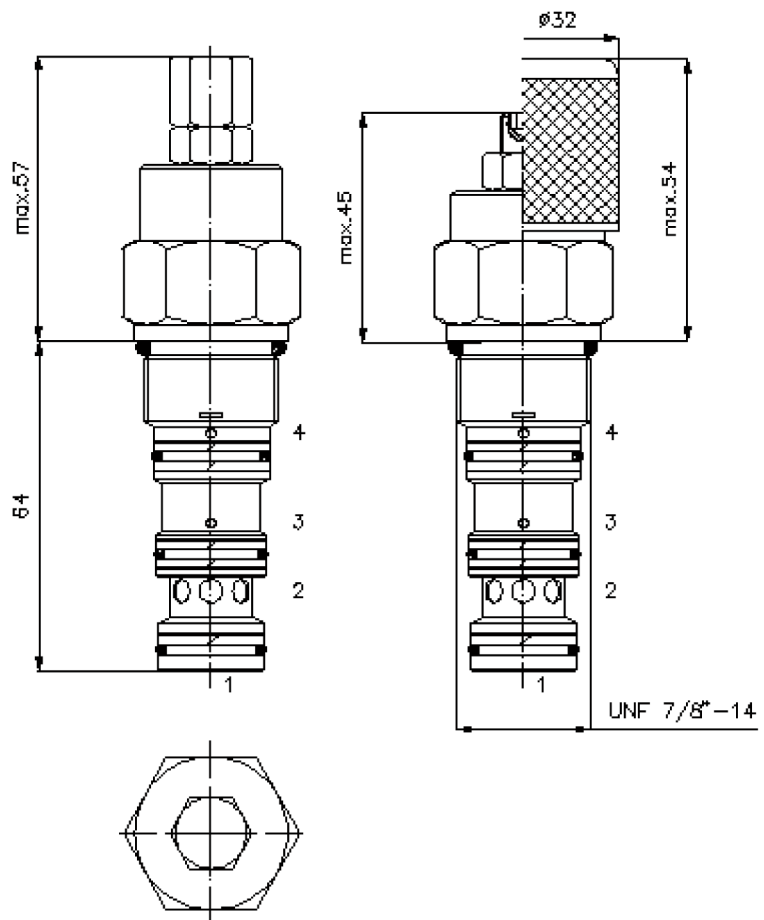
**FAT•N**



HEX 1/2"

HEX 1"  
(torque  
cartridge:  
48 - 54 Nm)

cavity:  
C-10-4  
see  
data-sheet no.:  
[IK-400-109-00](#)



# counterbalance valve, screw-in type (vented spring)

VCB1-10.-.-0-.-..



Motrac Hydraulik GmbH  
Siemensring 87 - D-47877 Willich  
fon +49-(0)2154-8162.0 - fax +49-(0)2154-8162.499  
e-mail info.miw@motracindustries.com  
internet www.motracindustries.com



MC-420-101-00

(subject to change)

## Ordering example:

VCB    1   - 10N -   C   -   0   -   A    50  
|        |        |        |        |        |  
**A**    **B**    **C**    **D**    **E**    **F**    **G**

## Model code:

- |   |  |
|---|--|
| <p><b>A</b> <b>design</b><br/>counter balance valve</p> <p><b>B</b> <b>pilot ratio</b><br/>1 = 4 : 1<br/>vented spring</p> <p><b>C</b> <b>size and sealing</b><br/>10N = Buna (NBR)<br/>10V = Viton (FPM)</p> <p><b>D</b> <b>adjustment</b><br/>S = screw adjustment<br/>C = cap<br/>K = handknob</p> | <p><b>E</b> <b>construction</b><br/>0 = screw-in valve</p> <p><b>F</b> <b>check valve free flow crack pressure</b><br/>A = 1.4 bar<br/>B = 0.28 bar</p> <p><b>G</b> <b>pressure range</b><br/>30 = 62.0 - 210 bar<br/>50 = 186.0 - 350 bar</p> |
|---|--|

## Technical Data:

- |                           |   |
|---------------------------|---|
| <b>note:</b>              | left turn (counter clockwise) = increasing pressure<br>right turn (clockwise) = reducing pressure |
| <b>nominal pressure:</b>  | 350 bar   |
| <b>nominal flow:</b>      | 60 l/min  |
| <b>weight:</b>            | 0.36 kg   |
| <b>temperature range:</b> | -40°C to 120°C  |
| <b>fluids:</b>            | hydraulic oil as per DIN 51524 T1 (ISO TC 131)  |
| <b>max. leakage:</b>      | 5 drops/min at 22 cSt (50°C) and 77% crack pressure   |
| <b>seals:</b>             | optional Buna (NBR) or Viton (FPM), as well as Teflon wascher (PTFE)                              |
| <b>cavity:</b>            | C-10-4 see datasheet no. <a href="#">IK-400-109-00</a> Review note!                               |
| <b>housing:</b>           | 4LH-10.-B.. see datasheet no. <a href="#">IH-400-000-00</a>                                       |
| <b>seal kit:</b>          | SP-MDS-10N-45 (NBR), SP-MDS-10V-45 (FPM)  |