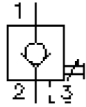


check valve, screw-in type (manual operated)

POC1-12.-S-0-...

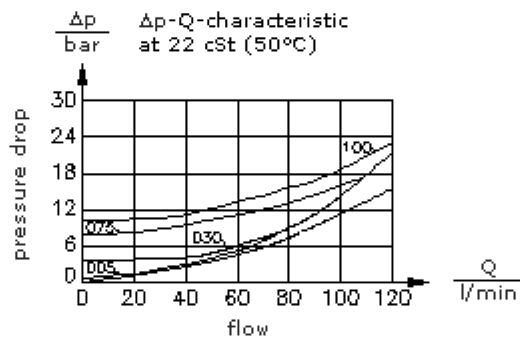
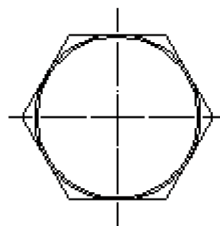
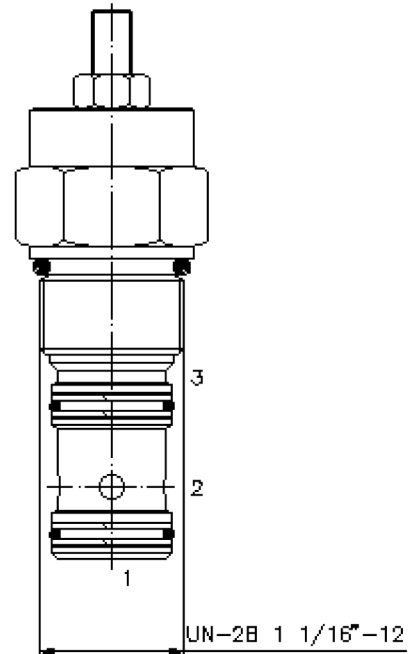
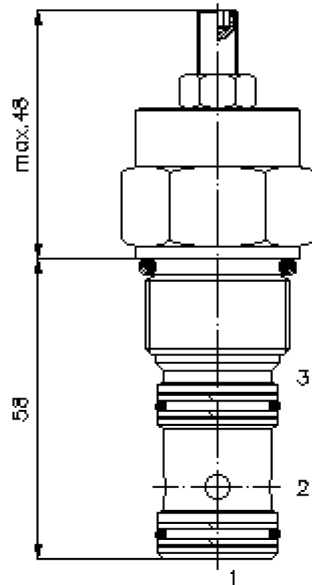
MC-210-122-00

(subject to change)



HEX 1 1/4"
(torque
cartridge:
85 - 94 Nm)

cavity:
C-12-3S
see
data-sheet no.:
IK-200-129-00



check valve, screw-in type (manual operated)

POC1-12.-S-0-...



Motrac Hydraulik GmbH
Siemensring 87 - D-47877 Willich
fon +49-(0)2154-8162.0 - fax +49-(0)2154-8162.499
e-mail info.miw@motracindustries.com
internet www.motracindustries.com

MC-210-122-00

(subject to change)

FAT•N

Ordering example:

POC1 - 12N - S - 0 - 035
| | | | |
A **B** **C** **D** **E**

Model code:

- | | |
|--|--|
| A design check valve pilot operated by hydraulics pilot ratio 3 : 1 | D construction 0 = screw-in valve |
| B size and sealing 12N = Buna (NBR) 12V = Viton (FPM) | E crack pressure 005 = 0.3 bar 030 = 2.1 bar 075 = 5.2 bar 100 = 6.9 bar |
| C adjustment S = manually pilot operated | |

Technical Data:

| | |
|---------------------------|--|
| nominal pressure: | 350 bar |
| nominal flow: | 114 l/min |
| weight: | 0.34 kg |
| temperature range: | -40°C to 120°C |
| fluids: | hydraulic oil as per DIN 51524 T1 (ISO TC 131) |
| max. leakage: | 1 -> 2 = 5 drops/min at 22 cSt (50°) and 350 bar |
| seals: | optional Buna (NBR) or Viton (FPM), as well as Teflon wascher (PTFE) |
| cavity: | C-12-3S see datasheet no. IK-200-129-00 |
| housing: | 3SLH-12.-B.. see datasheet no. IH-200-000-00 |
| seal kit: | SP-MDS-12N-34S (NBR), SP-MDS-12V-34S (FPM) |