

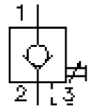
# check valve, screw-in type (manual operated)

POC1-10.-S-0-...

MC-210-102-00

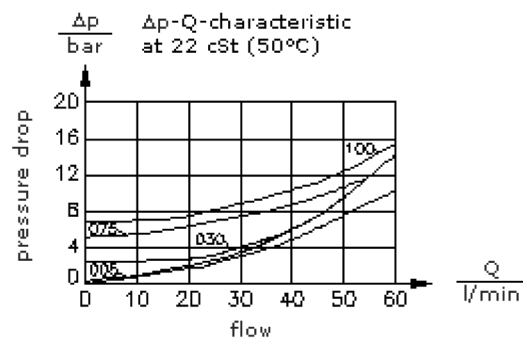
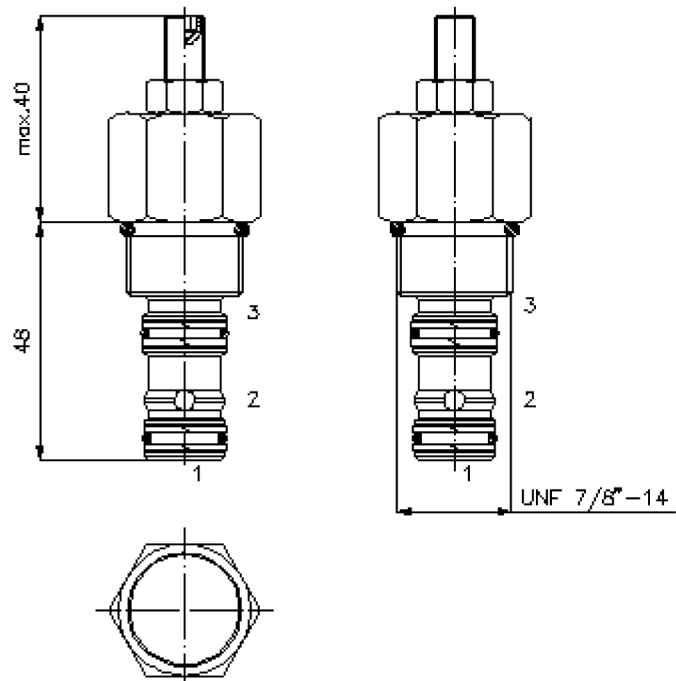
(subject to change)

FAT•N



HEX 1"  
(torque  
cartridge:  
48 - 54 Nm)

cavity:  
C-10-3S  
see  
data-sheet no.:  
[IK-200-109-00](#)



# check valve, screw-in type (manual operated)

POC1-10.-S-0-...



Motrac Hydraulik GmbH  
Siemensring 87 - D-47877 Willich  
fon +49-(0)2154-8162.0 - fax +49-(0)2154-8162.499  
e-mail info.miw@motracindustries.com  
internet www.motracindustries.com

FATON

MC-210-102-00

(subject to change)

## Ordering example:

POC1 - 10N - S - 0 - 035  
|        |        |        |        |  
**A**    **B**    **C**    **D**    **E**

## Model code:

- |  |  |
|--|--|
| <b>A</b> <b>design</b><br>check valve<br>pilot operated by hydraulics<br>pilot ratio 3 : 1 | <b>D</b> <b>construction</b><br>0 = screw-in valve   |
| <b>B</b> <b>size and sealing</b><br>10N = Buna (NBR)<br>10V = Viton (FPM)                  | <b>E</b> <b>crack pressure</b><br>005 = 0.3 bar<br>030 = 2.1 bar<br>075 = 5.2 bar<br>100 = 6.9 bar |
| <b>C</b> <b>adjustment</b><br>S = manually pilot operated                                  |  |

## Technical Data:

<b>nominal pressure:</b>	350 bar
<b>nominal flow:</b>	57 l/min
<b>weight:</b>	0.17 kg
<b>temperature range:</b>	-40°C to 120°C
<b>fluids:</b>	hydraulic oil as per DIN 51524 T1 (ISO TC 131)
<b>max. leakage:</b>	1 -> 2 = 5 drops/min at 22 cSt (50°) and 350 bar
<b>seals:</b>	optional Buna (NBR) or Viton (FPM), as well as Teflon wascher (PTFE)
<b>cavity:</b>	C-10-3S see datasheet no. <a href="#">IK-200-109-00</a>
<b>housing:</b>	3SLH-10.-B.. see datasheet no. <a href="#">IH-200-000-00</a>
<b>seal kit:</b>	SP-MDS-10N-34S (NBR), SP-MDS-10V-34S (FPM)