

check valve, screw-in type (pilot operated)

POC1-10.-F-0-...

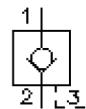
FAT-N



Motrac Hydraulik GmbH
Siemensring 87 - D-47877 Willich
fon +49-(0)2154-8162.0 - fax +49-(0)2154-8162.499
e-mail info.miw@motracindustries.com
internet www.motracindustries.com

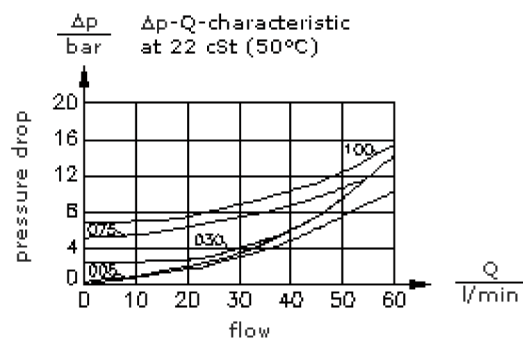
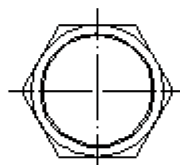
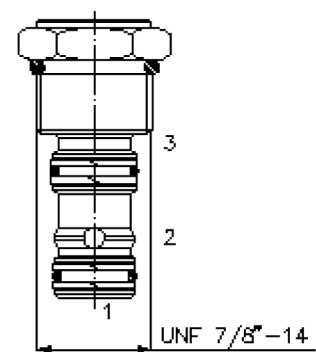
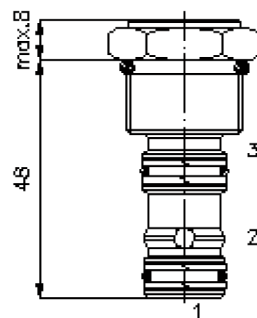
MC-210-101-00

(subject to change)



HEX 1"
(torque
cartridge:
48 - 54 Nm)

cavity:
C-10-3S
see
data-sheet no.:
IK-200-109-00



check valve, screw-in type (pilot operated)

POC1-10.-F-0-...



Motrac Hydraulik GmbH
Siemensring 87 - D-47877 Willich
fon +49-(0)2154-8162.0 - fax +49-(0)2154-8162.499
e-mail info.miw@motracindustries.com
internet www.motracindustries.com

MC-210-101-00

(subject to change)

Ordering example:

POC1 - 10N - F - 0 - 035
| | | | |
A **B** **C** **D** **E**

Model code:

- A design**
check valve
pilot operated by hydraulics
pilot ratio 3 : 1
- B size and sealing**
10N = Buna (NBR)
10V = Viton (FPM)
- C adjustment**
F = not manually pilot operated

- D construction**
0 = screw-in valve
- E crack pressure**
005 = 0.3 bar
030 = 2.1 bar
075 = 5.2 bar
100 = 6.9 bar

Technical Data:

nominal pressure:	350 bar
nominal flow:	57 l/min
weight:	0.1 kg
temperature range:	-40°C to 120°C
fluids:	hydraulic oil as per DIN 51524 T1 (ISO TC 131)
max. leakage:	1 -> 2 = 5 drops/min at 22 cSt (50°) and 350 bar
seals:	optional Buna (NBR) or Viton (FPM), as well as Teflon wascher (PTFE)
cavity:	C-10-3S see datasheet no. IK-200-109-00
housing:	3SLH-10.-B.. see datasheet no. IH-200-000-00
seal kit:	SP-MDS-10N-34S (NBR), SP-MDS-10V-34S (FPM)