

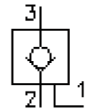
check valve, screw-in type (pilot operated)

SPC2-10.-P-0-...

MC-210-100-00

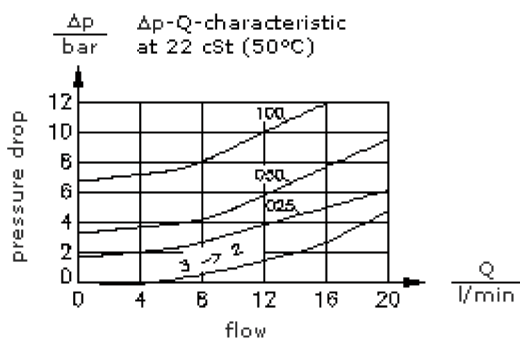
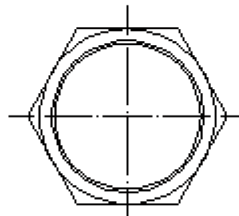
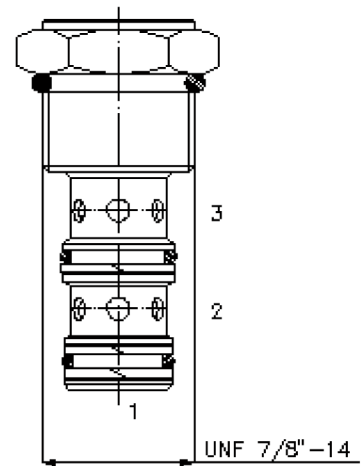
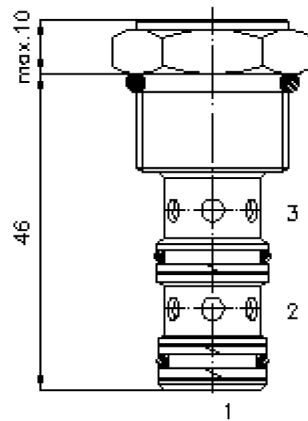
(subject to change)

FAT•N



HEX 1"
(torque
cartridge:
48 - 54 Nm)

cavity:
C-10-3
see
data-sheet no.:
[IK-300-109-00](#)



check valve, screw-in type (pilot operated)

SPC2-10.-P-0-...



Motrac Hydraulik GmbH
Siemensring 87 - D-47877 Willich
fon +49-(0)2154-8162.0 - fax +49-(0)2154-8162.499
e-mail info.miw@motracindustries.com
internet www.motracindustries.com

FAT•N

MC-210-100-00

(subject to change)

Ordering example:

SPC2 - 10N - P - 0 - 050
| | | | |
A **B** **C** **D** **E**

Model code:

- | | |
|--|---|
| A design check valve pilot operated by hydraulics pilot ratio 4 : 1 | C function mode poppet type valve |
| B size and sealing 10N = Buna (NBR) 10V = Viton (FPM) | D construction 0 = screw-in valve |
| | E crack pressure 025 = 1.7 bar 050 = 3.4 bar 100 = 6.9 bar |

Technical Data:

| | |
|---------------------------|--|
| nominal pressure: | 210 bar |
| nominal flow: | 23 l/min |
| weight: | 0.08 kg |
| temperature range: | -40°C to 120°C |
| fluids: | hydraulic oil as per DIN 51524 T1 (ISO TC 131) |
| max. leakage: | 3->2: 5 drops/min at 22 cSt (50°C) and 210 bar |
| seals: | optional Buna (NBR) or Viton (FPM), as well as Teflon wascher (PTFE) |
| cavity: | C-10-3 see datasheet no. IK-300-109-00 |
| housing: | 3LH-10.-B.. see datasheet no. IH-300-000-00 |
| seal kit: | SP-MDS-10N-33 (NBR), SP-MDS-10V-33 (FPM) |