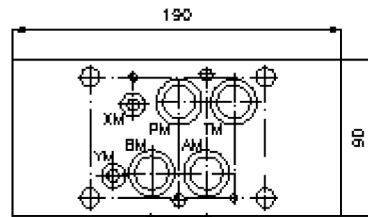
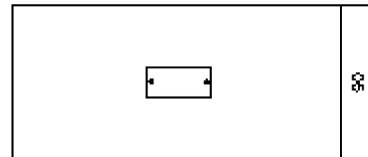
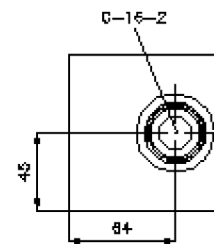
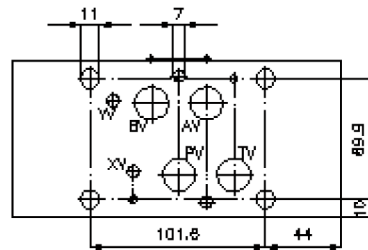
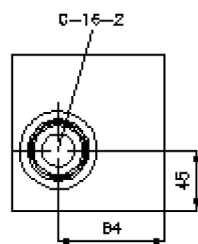
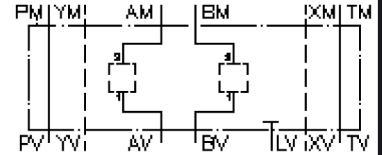


# multiple valve body, CETOP 7 (from AM2 to AV1 and BM2 to BV1)

MGZ-16.-AM2/AV1/16+BM2/BV1/16-09



# multiple valve body, CETOP 7 (from AM2 to AV1 and BM2 to BV1)

MGZ-16.-AM2/AV1/16+BM2/BV1/16-09



Motrac Hydraulik GmbH  
Siemensring 87 - D-47877 Willich  
fon +49-(0)2154-8162.0 - fax +49-(0)2154-8162.499  
e-mail info.miw@motracindustries.com  
internet www.motracindustries.com

IZ-950-501-00

(subject to change)

## Ordering example:

MGZ - 16A - AM2/AV1 / 16 + BM2/BV1 / 16 - 09  
|     |     |     |     |     |  
**A**   **B**   **C**   **D**   **E**   **F**   **G**

## Model code:

- |   |  |
|---|--|
| <b>A</b> <b>design</b><br>multipurpose valve body<br>with mounting interface DIN 24340 form A<br>sandwichplate design | <b>C</b> <b>function mode</b><br>AM2/AV1 = for one screw-in valve in A |
| <b>B</b> <b>size and material</b><br>16A = aluminum (F37)<br>16S = steel (9SMnPb28K resp. GGG-40)                     | <b>D</b> <b>size of cavity</b><br>size 16                              |
|   | <b>E</b> <b>function mode</b><br>BM2/BV1 = for one screw-in valve in B |
|   | <b>F</b> <b>size of cavity</b><br>size 16                              |
|   | <b>G</b> <b>height</b><br>09 = 90 mm                                   |

## Technical Data:

- nominal pressure:** 350 bar (S)  
250 bar (A)
- weight:** 4.4 / 10.9 kg (A/S)
- cavity:** C-16-2 see datasheet no. [IK-100-169-00](#)
- included:** 4 pcs. O-ring 22.22 x 2.62  
2 pcs. O-ring 9.19 x 2.62