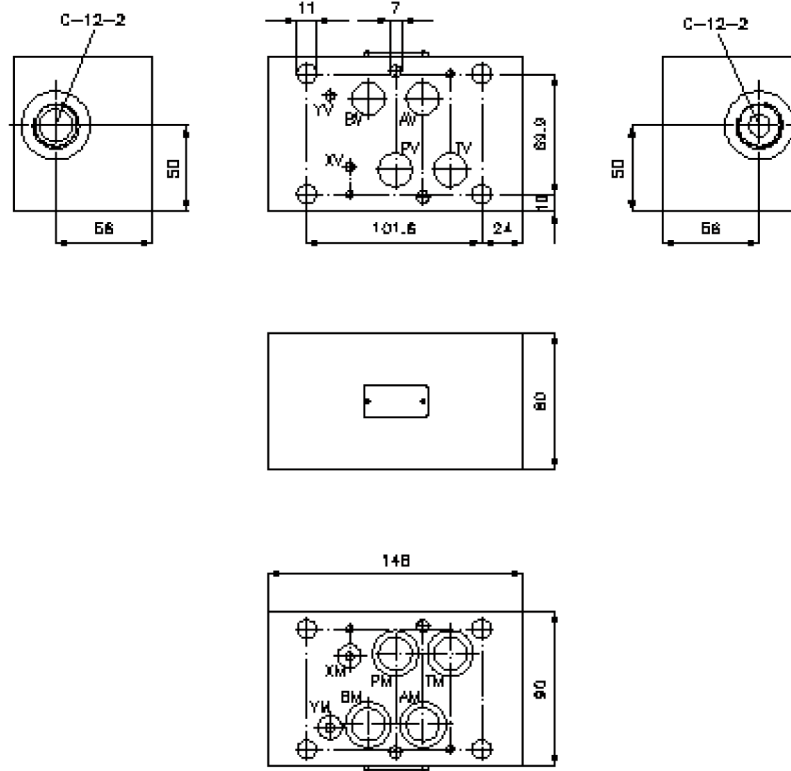
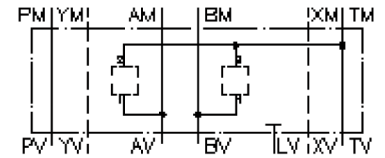


multiple valve body, CETOP 7 (from A1 to T2 and B1 to T2)

MGZ-16.-A1/T2/12+B1/T2/12-08

IZ-950-450-00

(subject to change)



multiple valve body, CETOP 7 (from A1 to T2 and B1 to T2)

MGZ-16.-A1/T2/12+B1/T2/12-08



Motrac Hydraulik GmbH
Siemensring 87 - D-47877 Willich
fon +49-(0)2154-8162.0 - fax +49-(0)2154-8162.499
e-mail info.miw@motracindustries.com
internet www.motracindustries.com

IZ-950-450-00

(subject to change)

Ordering example:

MGZ - 16A - A1/T2 / 12 + B1/T2 / 12 - 08

A **B** **C** **D** **E** **F** **G**

Model code:

- | | |
|--|--|
| <p>A design
multipurpose valve body
with mounting interface DIN 24340 form A
sandwichplate design</p> <p>B size and material
16A = aluminum (F37)
16S = steel (9SMnPb28K resp. GGG-40)</p> | <p>C function mode
A1/T2 = for one screw-in valve between A
and T</p> <p>D size of cavity
size 12</p> <p>E function mode
B1/T2 = for one screw-in valve between B
and T</p> <p>F size of cavity
size 12</p> <p>G height
08 = 80 mm</p> |
|--|--|

Technical Data:

- | | |
|--------------------------|---|
| nominal pressure: | 350 bar (S)
250 bar (A) |
| weight: | 3.1 / 8.6 kg (A/S) |
| cavity: | C-12-2 see datasheet no. <u>IK-100-129-00</u> |
| included: | 4 pcs. O-ring 22.22 x 2.62
2 pcs. O-ring 9.19 x 2.62 |