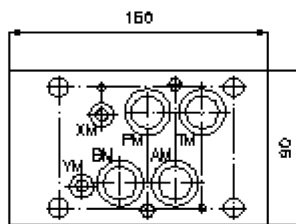
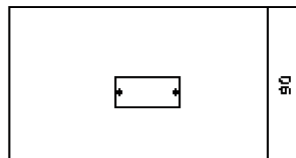
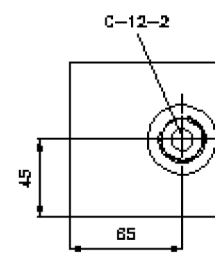
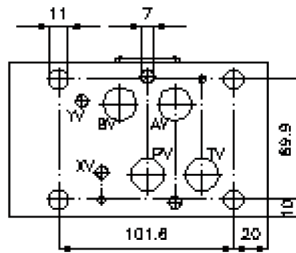
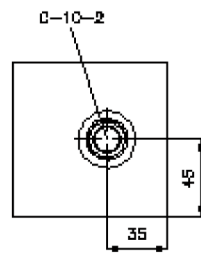
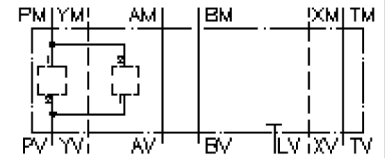


multiple valve body, CETOP 7 (from PM1 to PV2 and PM2 to PV1)

MGZ-16.-PM1PV2/10+PM2PV1/12-09



multiple valve body, CETOP 7 (from PM1 to PV2 and PM2 to PV1)

MGZ-16.-PM1PV2/10+PM2PV1/12-09



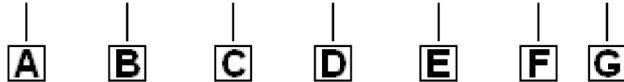
Motrac Hydraulik GmbH
Siemensring 87 - D-47877 Willich
fon +49-(0)2154-8162.0 - fax +49-(0)2154-8162.499
e-mail info.miw@motracindustries.com
internet www.motracindustries.com

IZ-950-350-00

(subject to change)

Ordering example:

MGZ - 16A - PM1PV2 / 10 + PM2PV1 / 12 - 09



Model code:

- | | |
|---|--|
| A design
multipurpose valve body
with mounting interface DIN 24340 form A
sandwichplate design | C function mode
PM1/PV2 = for one screw-in valve in P |
| B size and material
16A = aluminum (F37)
16S = steel (9SMnPb28K resp. GGG-40) | D size of cavity
size 10 |
| | E function mode
PM2/PV1 = for one screw-in valve in P |
| | F size of cavity
size 12 |
| | G height
09 = 90 mm |

Technical Data:

nominal pressure:	350 bar (S) 250 bar (A)
weight:	3.1 / 8.6 kg (A/S)
cavity:	C-12-2 see datasheet no. IK-100-129-00
cavity:	C-10-2 see datasheet no. IK-100-109-00
included:	4 pcs. O-ring 22.22 x 2.62 2 pcs. O-ring 9.19 x 2.62