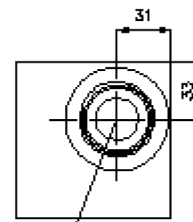
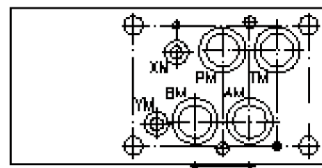
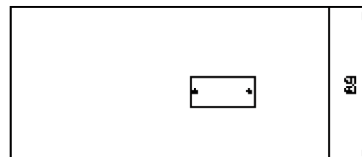
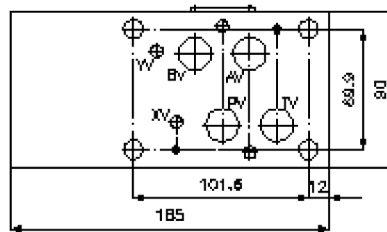
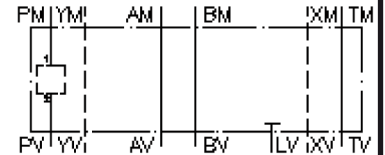


multiple valve body, CETOP 7 (from PM1 to PV2)

MGZ-16.-PM1/PV2/20-09

IZ-950-303-00

(subject to change)



C-20-2

multiple valve body, CETOP 7 (from PM1 to PV2)

MGZ-16.-PM1/PV2/20-09



Motrac Hydraulik GmbH
Siemensring 87 - D-47877 Willich
fon +49-(0)2154-8162.0 - fax +49-(0)2154-8162.499
e-mail info.miw@motracindustries.com
internet www.motracindustries.com

IZ-950-303-00

(subject to change)



Ordering example:

MGZ - 16A - PM1/PV2 / 20 - 09
| | | | |
A **B** **C** **D** **E**

Model code:

- | | |
|---|--|
| A design
multipurpose valve body
with mounting interface DIN 24340 form A
sandwichplate design | C function mode
PM1/PV2 = for one screw-in valve in P |
| B size and material
16A = aluminum (F37)
16S = steel (9SMnPb28K resp. GGG-40) | D size of cavity
size 20 |
| | E height
09 = 90 mm |

Technical Data:

- nominal pressure:** 350 bar (S)
250 bar (A)
- weight:** 3.8 / 10.6 kg (A/S)
- cavity:** C-20-2 see datasheet no. [IK-100-209-00](#)
- included:** 4 pcs. O-ring 22.22 x 2.62
2 pcs. O-ring 9.19 x 2.62