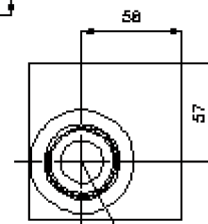
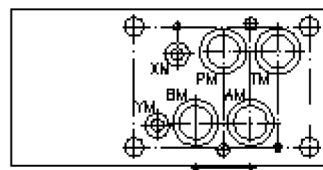
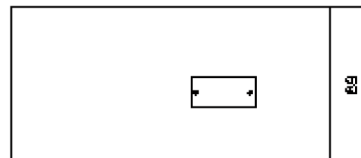
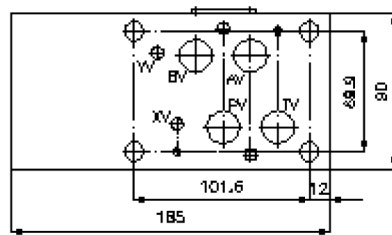
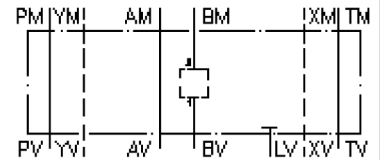


# multiple valve body, CETOP 7 (from BM2 to BV1)

MGZ-16.-BM2/BV1/20-09

IZ-950-301-00

(subject to change)



C-20-2

# multiple valve body, CETOP 7 (from BM2 to BV1)

MGZ-16.-BM2/BV1/20-09



Motrac Hydraulik GmbH  
Siemensring 87 - D-47877 Willich  
fon +49-(0)2154-8162.0 - fax +49-(0)2154-8162.499  
e-mail info.miw@motracindustries.com  
internet www.motracindustries.com

IZ-950-301-00

(subject to change)



## Ordering example:

MGZ - 16A - BM2/BV1 / 20 - 09

**A**

**B**

**C**

**D**

**E**

## Model code:

**A**

### design

multipurpose valve body  
with mounting interface DIN 24340 form A  
sandwichplate design

**B**

### size and material

16A = aluminum (F37)  
16S = steel (9SMnPb28K resp. GGG-40)

**C**

### function mode

BM2/BV1 = for one screw-in valve in B

**D**

### size of cavity

size 20

**E**

### height

09 = 90 mm

## Technical Data:

### nominal pressure:

350 bar (S)  
250 bar (A)

### weight:

3.8 / 10.6 kg (A/S)

### cavity:

C-20-2 see datasheet no. [IK-100-209-00](#)

### included:

4 pcs. O-ring 22.22 x 2.62  
2 pcs. O-ring 9.19 x 2.62