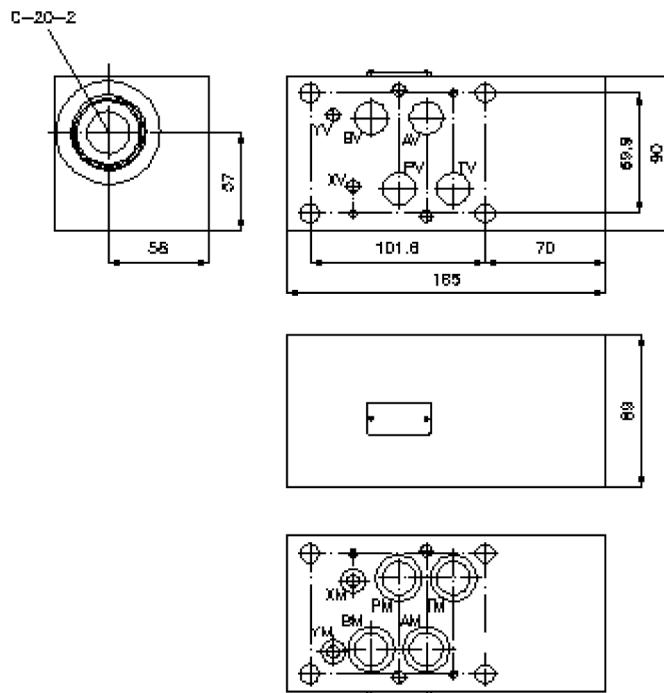
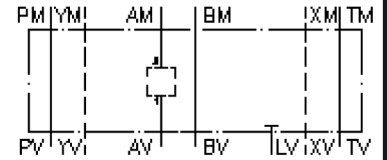


# multiple valve body, CETOP 7 (from AM2 to AV1)

MGZ-16.-AM2/AV1/20-09

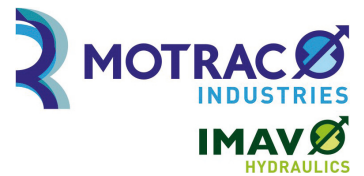
IZ-950-300-00

(subject to change)



# multiple valve body, CETOP 7 (from AM2 to AV1)

MGZ-16.-AM2/AV1/20-09



Motrac Hydraulik GmbH  
Siemensring 87 - D-47877 Willich  
fon +49-(0)2154-8162.0 - fax +49-(0)2154-8162.499  
e-mail info.miw@motracindustries.com  
internet www.motracindustries.com

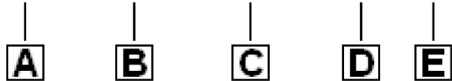
IZ-950-300-00

(subject to change)



## Ordering example:

MGZ - 16A - AM2/AV1 / 20 - 09



## Model code:

- |  |  |
|--|--|
| <p><b>A design</b><br/>multipurpose valve body<br/>with mounting interface DIN 24340 form A<br/>sandwichplate design</p> <p><b>B size and material</b><br/>16A = aluminum (F37)<br/>16S = steel (9SMnPb28K resp. GGG-40)</p> | <p><b>C function mode</b><br/>AM2/AV1 = for one screw-in valve in A</p> <p><b>D size of cavity</b><br/>size 20</p> <p><b>E height</b><br/>09 = 90 mm</p> |
|--|--|

## Technical Data:

- |                          |   |
|--------------------------|---|
| <b>nominal pressure:</b> | 350 bar (S)<br>250 bar (A)                              |
| <b>weight:</b>           | 3.8 / 10.6 kg (A/S)                                     |
| <b>cavity:</b>           | C-20-2 see datasheet no. <a href="#">IK-100-209-00</a>  |
| <b>included:</b>         | 4 pcs. O-ring 22.22 x 2.62<br>2 pcs. O-ring 9.19 x 2.62 |