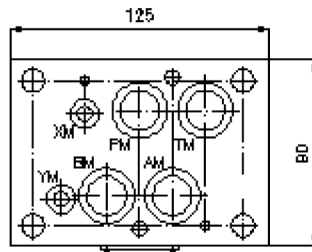
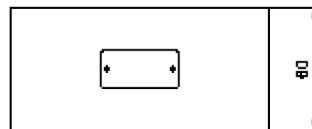
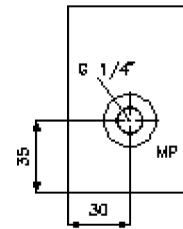
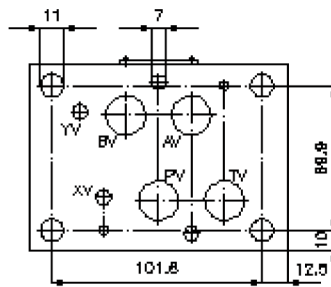
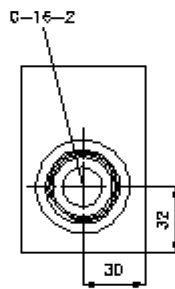
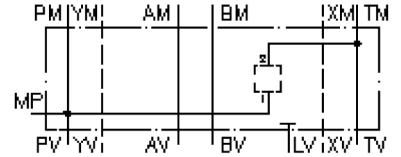


multiple valve body, CETOP 7 (from P1 to T2+MP)

MGZ-16.-P1/T2/16+MP-06

IZ-950-250-00

(subject to change)



multiple valve body, CETOP 7 (from P1 to T2+MP)

MGZ-16.-P1/T2/16+MP-06



Motrac Hydraulik GmbH
Siemensring 87 - D-47877 Willich
fon +49-(0)2154-8162.0 - fax +49-(0)2154-8162.499
e-mail info.miw@motracindustries.com
internet www.motracindustries.com

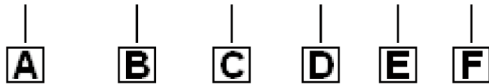
IZ-950-250-00

(subject to change)



Ordering example:

MGZ - 16A - P1/T2 / 16 + MP - 06



Model code:

- | | |
|--|---|
| <p>A design
multipurpose valve body
with mounting interface DIN 24340 form A
sandwichplate design</p> <p>B size and material
16A = aluminum (F37)
16S = steel (9SMnPb28K resp. GGG-40)</p> | <p>C function mode
P1/T2 = for one screw-in valve between P
and T</p> <p>D size of cavity
size 16</p> <p>E function mode
MP = gauge port at the P side</p> <p>F height
06 = 60 mm</p> |
|--|---|

Technical Data:

- nominal pressure:** 350 bar (S)
250 bar (A)
- weight:** 1.7 / 4.8 kg (A/S)
- cavity:** C-16-2 see datasheet no. [IK-100-169-00](#)
- included:** 4 pcs. O-ring 22.22 x 2.62
2 pcs. O-ring 9.19 x 2.62