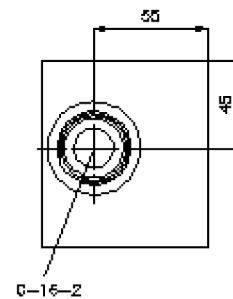
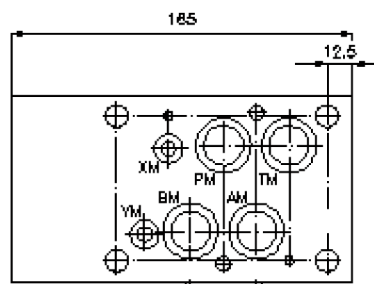
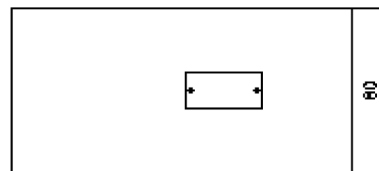
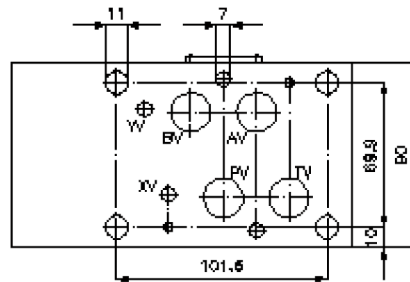
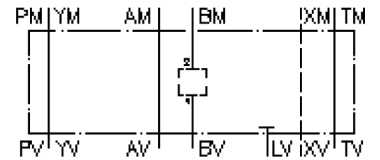


multiple valve body, CETOP 7 (from BM2 to BV1)

MGZ-16.-BM2/BV1/16-08



multiple valve body, CETOP 7 (from BM2 to BV1)

MGZ-16.-BM2/BV1/16-08



Motrac Hydraulik GmbH
Siemensring 87 - D-47877 Willich
fon +49-(0)2154-8162.0 - fax +49-(0)2154-8162.499
e-mail info.miw@motracindustries.com
internet www.motracindustries.com

IZ-950-204-00

(subject to change)



Ordering example:

MGZ - 16A - BM2/BV1 / 16 - 08

A **B** **C** **D** **E**

Model code:

- A design**
multipurpose valve body
with mounting interface DIN 24340 form A
sandwichplate design
- B size and material**
16A = aluminum (F37)
16S = steel (9SMnPb28K resp. GGG-40)

- C function mode**
BM2/BV1 = for one screw-in valve in B
- D size of cavity**
size 16
- E height**
08 = 80 mm

Technical Data:

- nominal pressure:** 350 bar (S)
250 bar (A)
- weight:** 2.8 / 8.4 kg (A/S)
- cavity:** C-16-2 see datasheet no. IK-100-169-00
- included:** 4 pcs. O-ring 22.22 x 2.62
2 pcs. O-ring 9.19 x 2.62