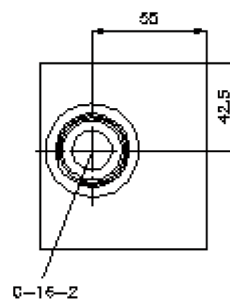
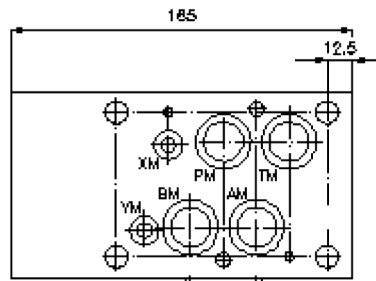
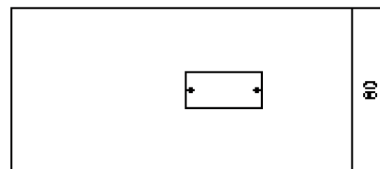
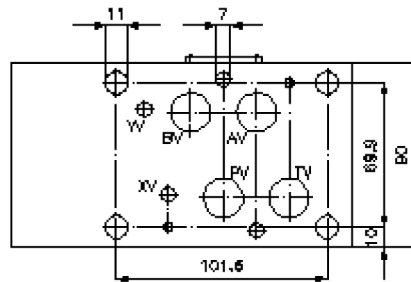
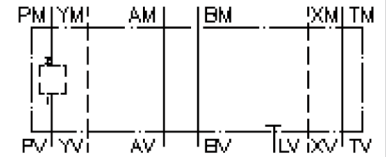


multiple valve body, CETOP 7 (from PM2 to PV1)

MGZ-16.-PM2/PV1/16-08

IZ-950-201-00

(subject to change)



multiple valve body, CETOP 7 (from PM2 to PV1)

MGZ-16.-PM2/PV1/16-08



Motrac Hydraulik GmbH
Siemensring 87 - D-47877 Willich
fon +49-(0)2154-8162.0 - fax +49-(0)2154-8162.499
e-mail info.miw@motracindustries.com
internet www.motracindustries.com

IZ-950-201-00

(subject to change)



Ordering example:

MGZ - 16A - PM2/PV1 / 16 - 08

A **B** **C** **D** **E**

Model code:

- | | |
|---|--|
| A design
multipurpose valve body
with mounting interface DIN 24340 form A
sandwichplate design | C function mode
PM2/PV1 = for one screw-in valve in P |
| B size and material
16A = aluminum (F37)
16S = steel (9SMnPb28K resp. GGG-40) | D size of cavity
size 16 |
| | E height
08 = 80 mm |

Technical Data:

- nominal pressure:** 350 bar (S)
250 bar (A)
- weight:** 2.8 / 8.4 kg (A/S)
- cavity:** C-16-2 see datasheet no. [IK-100-169-00](#)
- included:** 4 pcs. O-ring 22.22 x 2.62
2 pcs. O-ring 9.19 x 2.62