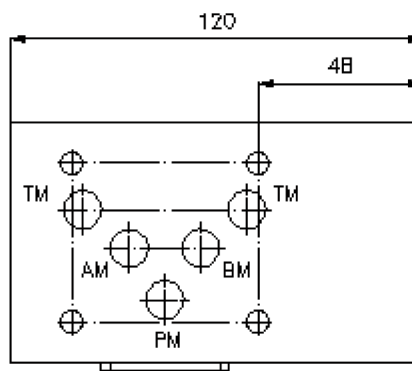
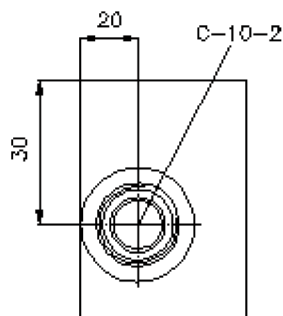
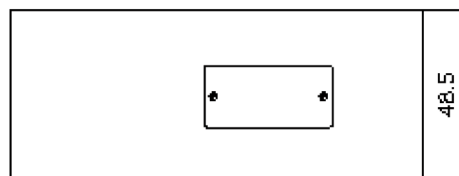
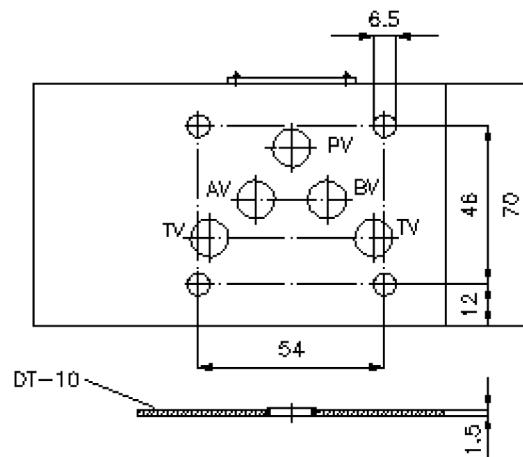
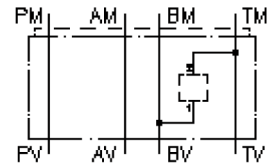


# multiple valve body, CETOP 5 (from B2 to T1)

MGZ-10.-B2/T1/10-05

IZ-940-112-00

(subject to change)



# multiple valve body, CETOP 5 (from B2 to T1)

MGZ-10.-B2/T1/10-05



Motrac Hydraulik GmbH  
Siemensring 87 - D-47877 Willich  
fon +49-(0)2154-8162.0 - fax +49-(0)2154-8162.499  
e-mail info.miw@motracindustries.com  
internet www.motracindustries.com

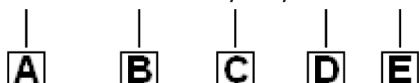
IZ-940-112-00

(subject to change)



## Ordering example:

MGZ - 10A - B2/T1 / 10 - 05



## Model code:

- |  |   |
|--|---|
| <p><b>A design</b><br/>multipurpose valve body<br/>with mounting interface DIN 24340 form A<br/>sandwichplate design</p> <p><b>B size and material</b><br/>10A = aluminum (F37)<br/>10S = steel (9SMnPb28K resp. GGG-40)</p> | <p><b>C function mode</b><br/>B2/T1 = for one screw-in valve between B<br/>and T</p> <p><b>D size of cavity</b><br/>size 10</p> <p><b>E height</b><br/>05 = 50 mm</p> |
|--|---|

## Technical Data:

- note:** Concerning the flow direction (return and supply) it is important to review the mounting position (port "1" and "2"). Rotating around the lateral axis of the variant TT+TT and AA+BB the flow direction of the multipurpose valve body CETOP 5 will change from 1 to 2 and from 2 to 1 (see symbol). For variant AA and BB rotating around the lateral axis not only the flow direction will change as above mentioned. As well the channel will change: e.g. A will change to B and B to A.
- nominal pressure:** 350 bar (S)  
250 bar (A)
- weight:** 1.1 / 3.3 kg (A/S)
- cavity:** C-10-2 see datasheet no. [IK-100-109-00](#)
- included:** DT-10 = sealing plate with vulcanized O-ring (Viton FPM)