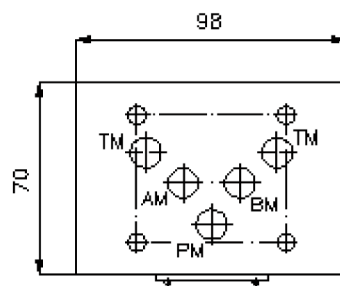
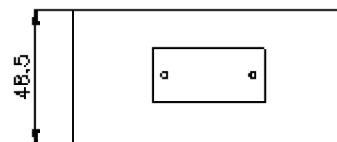
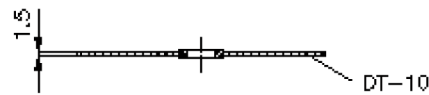
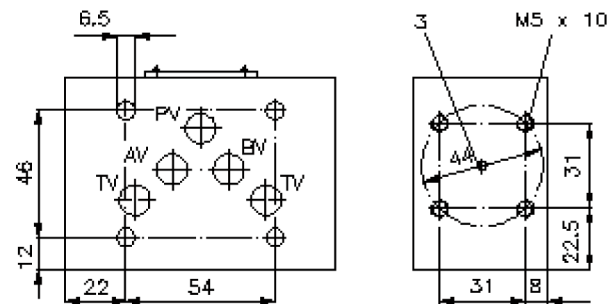
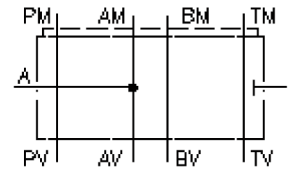


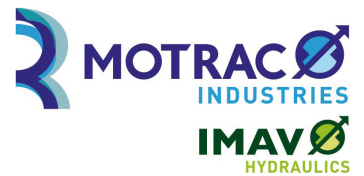
pressure switch sandwich plate, CETOP 5 (in A) DZ-10.-A

IZ-880-402-00

(subject to change)



pressure switch sandwich plate, CETOP 5 (in A) DZ-10.-A



Motrac Hydraulik GmbH
Siemensring 87 - D-47877 Willich
fon +49-(0)2154-8162.0 - fax +49-(0)2154-8162.499
e-mail info.miw@motracindustries.com
internet www.motracindustries.com

IZ-880-402-00

(subject to change)



Ordering example:

DZ - 10A - A
| | |
A **B** **C**

Model code:

A **design**
pressure switch plate
with mounting interface DIN 24340 form A
sandwichplate design

B **size and material**
10A = aluminum (F37)
10S = steel (9SMnPb28K resp. GGG-40)

C **function mode**
A = in A acting

Technical Data:

nominal pressure: 250 bar (A)
350 bar (S)

weight: 0.9 / 2.1 kg (A/S)

included: DT-10 = sealing plate with vulcanized O-ring (Viton FPM)