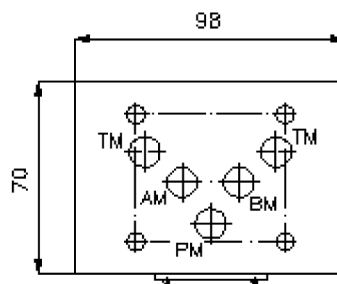
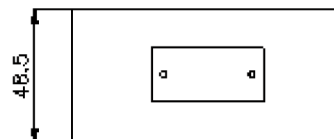
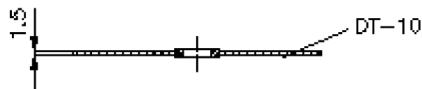
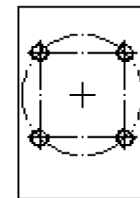
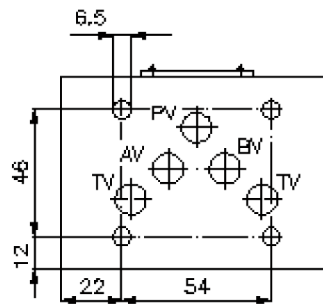
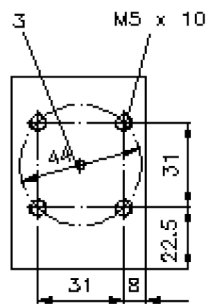
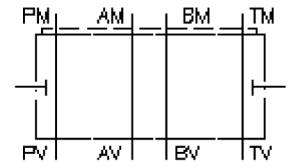


# pressure switch sandwich plate, CETOP 5 (without drilled pressure switch hole)

DZ-10.-\*

IZ-880-400-00

(subject to change)



# pressure switch sandwich plate, CETOP 5 (without drilled pressure switch hole)

DZ-10.-\*



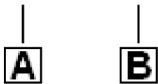
Motrac Hydraulik GmbH  
Siemensring 87 - D-47877 Willich  
fon +49-(0)2154-8162.0 - fax +49-(0)2154-8162.499  
e-mail info.miw@motracindustries.com  
internet www.motracindustries.com

IZ-880-400-00

(subject to change)

## Ordering example:

DZ - 10A



## Model code:

**A** **design**  
pressure switch plate  
with mounting interface DIN 24340 form A  
sandwichplate design

**B** **size and material**  
10A = aluminum (F37)  
10S = steel (9SMnPb28K resp. GGG-40)

## Technical Data:

**nominal pressure:** 250 bar (A)  
350 bar (S)

**weight:** 0.9 / 2.1 kg (A/S)

**included:** DT-10 = sealing plate with vulcanized O-ring (Viton FPM)