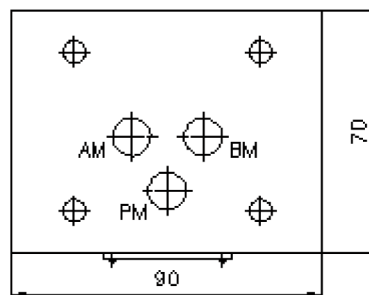
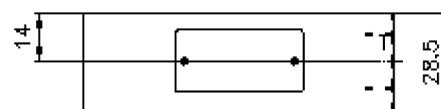
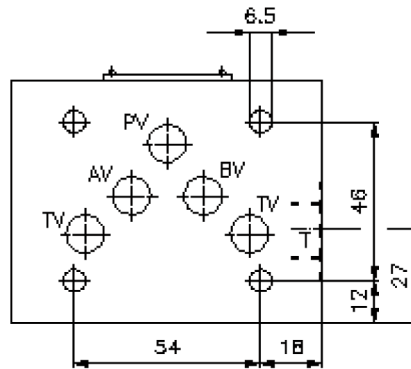
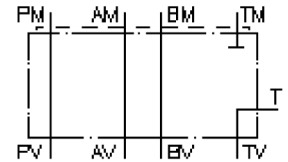


# inducting plate, CETOP 5 (in T)

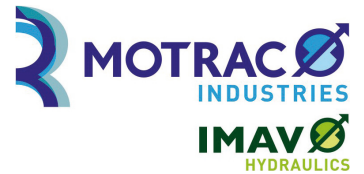
EPZ-10.-T-B..

IZ-870-401-00

(subject to change)



# inducting plate, CETOP 5 (in T) EPZ-10.-T-B..



Motrac Hydraulik GmbH  
Siemensring 87 - D-47877 Willich  
fon +49-(0)2154-8162.0 - fax +49-(0)2154-8162.499  
e-mail info.miw@motracindustries.com  
internet www.motracindustries.com

IZ-870-401-00

(subject to change)



## Ordering example:

EPZ - 10A - T - B03  
|        |        |        |  
**A**    **B**    **C**    **D**

## Model code:

- |  |  |
|--|--|
| <p><b>A design</b><br/>inducting plate<br/>with mounting interface DIN 24340 form A<br/>sandwichplate design</p> <p><b>B size and material</b><br/>10A = aluminum (F37)<br/>10S = steel (9SMnPb28K resp. GGG-40)</p> | <p><b>C function mode</b><br/>T = in T</p> <p><b>D thread size</b><br/>B02 = BSPP 1/4"<br/>B03 = BSPP 3/8"</p> |
|--|--|

## Technical Data:

- nominal pressure:** 250 bar (A)  
350 bar (S)
- weight:** 0.4 / 1.3 kg (A/S)
- included:** DT-10 = sealing plate with vulcanized O-ring (Viton FPM)