

linking/crossover plate CETOP 7 (P with B, T with A and X with Y connected)

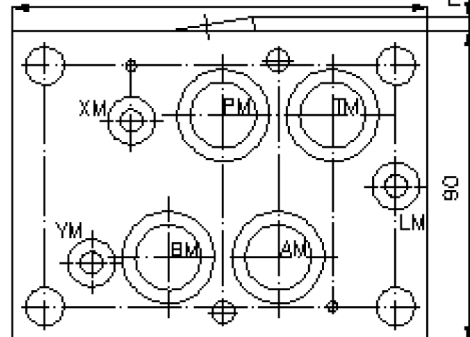
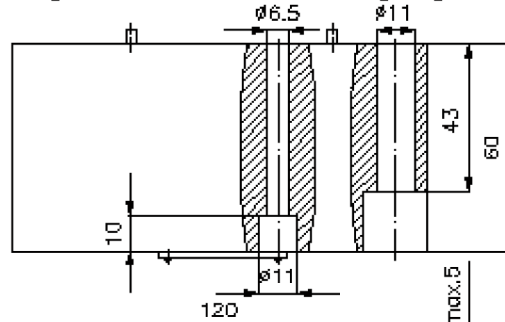
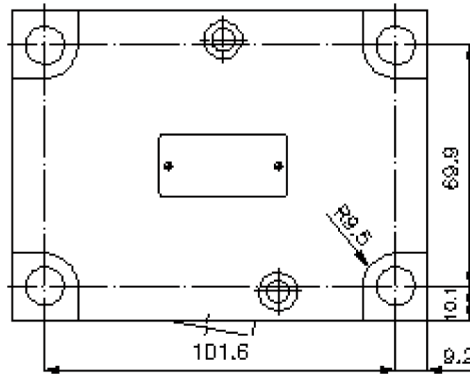
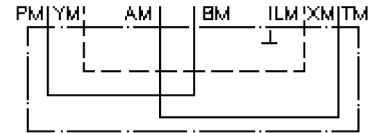
UP-16.-PB+TA+XY



Motrac Hydraulik GmbH
Siemensring 87 - D-47877 Willich
fon +49-(0)2154-8162.0 - fax +49-(0)2154-8162.499
e-mail info.miw@motracindustries.com
internet www.motracindustries.com

IZ-850-506-00

(subject to change)



linking/crossover plate CETOP 7 (P with B, T with A and X with Y connected)

UP-16.-PB+TA+XY



Motrac Hydraulik GmbH
Siemensring 87 - D-47877 Willich
fon +49-(0)2154-8162.0 - fax +49-(0)2154-8162.499
e-mail info.miw@motracindustries.com
internet www.motracindustries.com

IZ-850-506-00

(subject to change)

Ordering example:

UP - 16A - PB+TA+XY
| | |
A **B** **C**

Model code:

- | | |
|--|---|
| <p>A design
turn round plate
with mounting interface DIN 24340 form A</p> <p>B size and material
16A = aluminum (F37)
16S = steel (9SMnPb28K resp. GGG-40)</p> | <p>C function mode
PB+TA+XY = P with B, T with A and X with Y connected</p> |
|--|---|

Technical Data:

- | | |
|--------------------------|--|
| note: | required mounting screws:
2 pcs. M6 x 60 DIN 912
4 pcs. M10 x 60 DIN 912 |
| nominal pressure: | 250 bar (A)
350 bar (S) |
| weight: | 1.8 / 5.5 kg (A/S) |