

# linking/crossover plate CETOP 5 (P with A, T with B and X with Y connected)

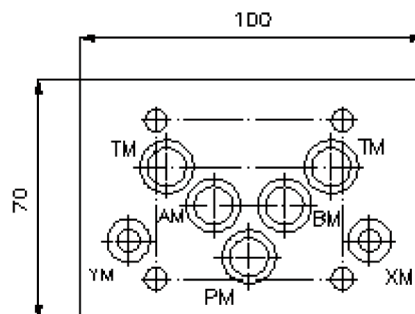
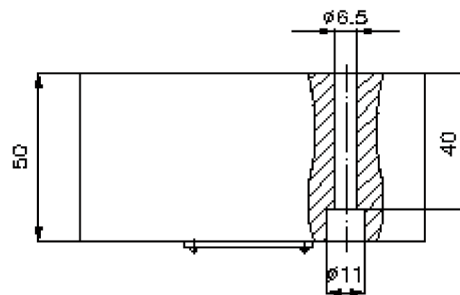
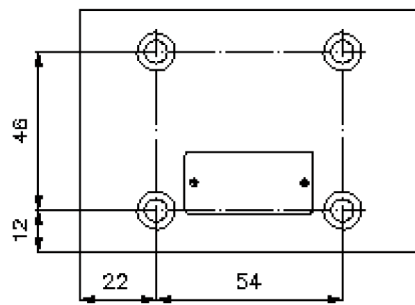
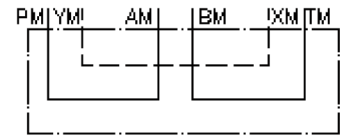
UP-10.-PA+TB+XY



Motrac Hydraulik GmbH  
Siemensring 87 - D-47877 Willich  
fon +49-(0)2154-8162.0 - fax +49-(0)2154-8162.499  
e-mail info.miw@motracindustries.com  
internet www.motracindustries.com

IZ-850-412-00

(subject to change)



# linking/crossover plate CETOP 5 (P with A, T with B and X with Y connected)

UP-10.-PA+TB+XY



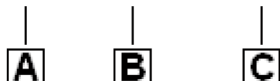
Motrac Hydraulik GmbH  
Siemensring 87 - D-47877 Willich  
fon +49-(0)2154-8162.0 - fax +49-(0)2154-8162.499  
e-mail info.miw@motracindustries.com  
internet www.motracindustries.com

IZ-850-412-00

(subject to change)

## Ordering example:

UP - 10A - PA+TB+XY



## Model code:

- |  |   |
|--|---|
| <p><b>A</b> <b>design</b><br/>turn round plate<br/>with mounting interface DIN 24340 form A</p> <p><b>B</b> <b>size and material</b><br/>10A = aluminum (F37)<br/>10S = steel (9SMnPb28K resp. GGG-40)</p> | <p><b>C</b> <b>function mode</b><br/>PA+TB+XY = P with A, T with B and X with Y connected</p> |
|--|---|

## Technical Data:

- |                          |   |
|--------------------------|---|
| <b>note:</b>             | required mounting screws:<br>4 pcs. M6 x 50 DIN 912 |
| <b>nominal pressure:</b> | 250 bar (A)<br>350 bar (S)                          |
| <b>weight:</b>           | 0.9 / 2.4 kg (A/S)                                  |