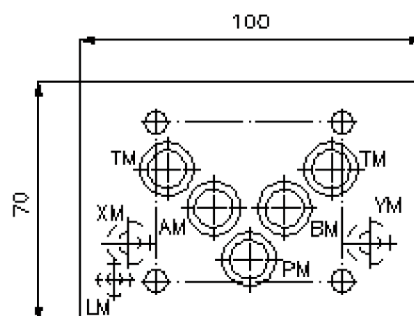
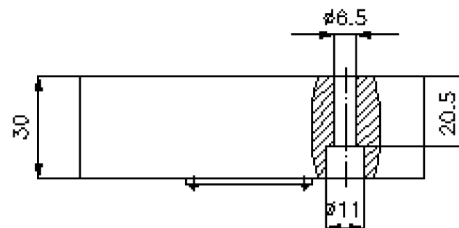
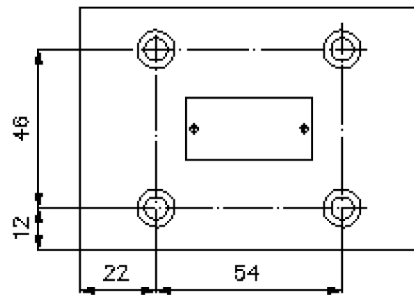
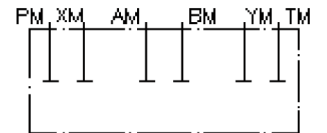


blanking plate CETOP 5 (P, T, A, B, X and Y closed)

VSP-10.-XY

IZ-850-411-00

(subject to change)



blanking plate CETOP 5 (P, T, A, B, X and Y closed) VSP-10.-XY



Motrac Hydraulik GmbH
Siemensring 87 - D-47877 Willich
fon +49-(0)2154-8162.0 - fax +49-(0)2154-8162.499
e-mail info.miw@motracindustries.com
internet www.motracindustries.com

IZ-850-411-00

(subject to change)



Ordering example:

VSP - 10A - XY
| | |
A **B** **C**

Model code:

- | | |
|--|--|
| <p>A design
linking sandwich plate
with mounting interface DIN 24340 form A</p> <p>B size and material
10A = aluminum (F37)
10S = steel (9SMnPb28K resp. GGG-40)</p> | <p>C function mode
XY = mit X und Y Bohrung</p> |
|--|--|

Technical Data:

note:	required mounting screws: 4 pcs. M6 x 30 DIN 912
nominal pressure:	250 bar (A) 350 bar (S)
weight:	0.9 / 2.4 kg (A/S)
included:	5 pcs. O-Ring 12.42 x 1.78 2 pcs. O-Ring 9.25 x 1.78