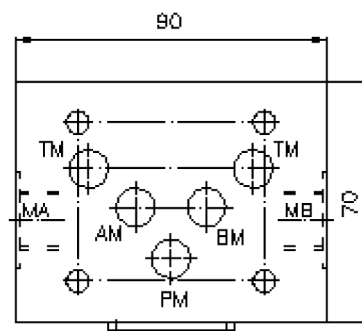
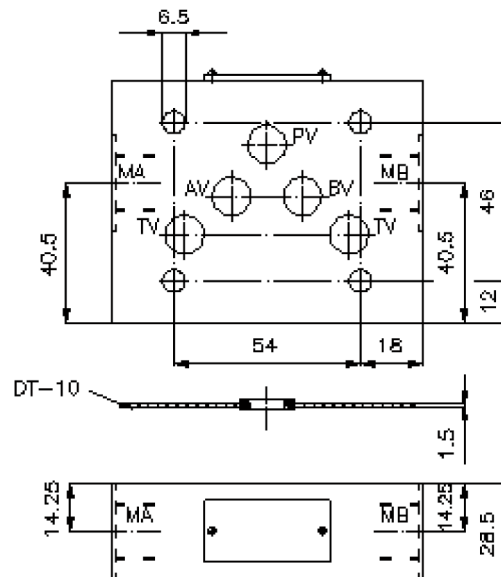
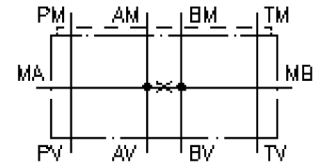


# gauge port plate, CETOP 5 ((sandwich plate) orifice from A to B)

MPZSD-10.-A+B

IZ-833-400-00

(subject to change)



# gauge port plate, CETOP 5 ((sandwich plate) orifice from A to B) MPZSD-10.-A+B



Motrac Hydraulik GmbH  
Siemensring 87 - D-47877 Willich  
fon +49-(0)2154-8162.0 - fax +49-(0)2154-8162.499  
e-mail info.miw@motracindustries.com  
internet www.motracindustries.com

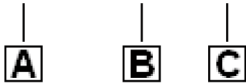
IZ-833-400-00

(subject to change)



## Ordering example:

MPZSD - 10A - A+B



## Model code:

- |   |  |  |
|---|--|--|
| <p><b>A</b> <b>design</b><br/>gauge plate<br/>with mounting interface DIN 24340 form A<br/>sandwichplate design</p> | <p><b>B</b> <b>size and material</b><br/>10A = aluminum (F37)<br/>10S = steel (9SMnPb28K resp. GGG-40)</p> | <p><b>C</b> <b>function mode</b><br/>A+B = orifice from A to B</p> |
|---|--|--|

## Technical Data:

- |                          |  |
|--------------------------|--|
| <b>nominal pressure:</b> | 210 bar (A)<br>350 bar (S)                               |
| <b>weight:</b>           | 0.6 / 1.4 kg (A/S)                                       |
| <b>included:</b>         | DT-10 = sealing plate with vulcanized O-ring (Viton FPM) |