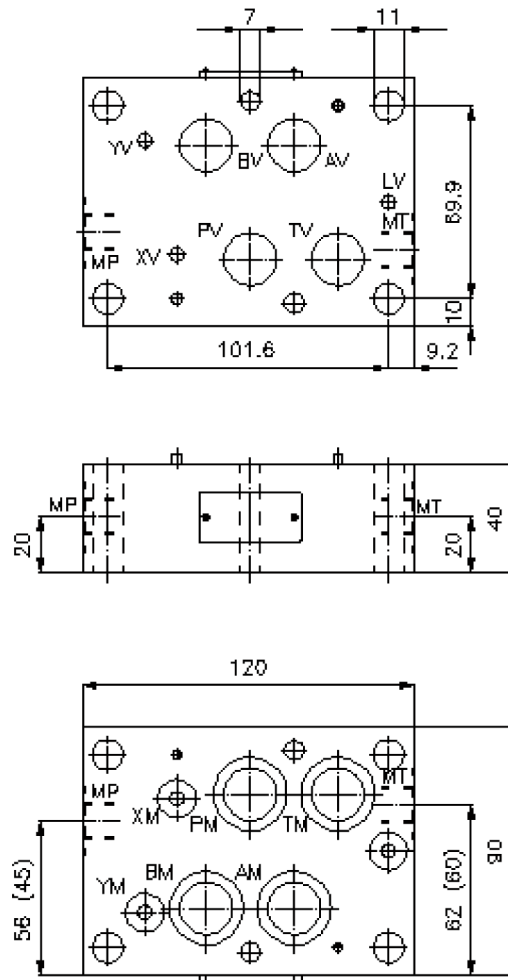
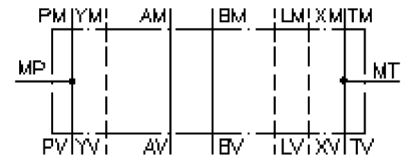


gauge port plate, CETOP 7 ((sandwich plate) port in P+T)

MPZ-16.-P+T-B..



gauge port plate, CETOP 7 ((sandwich plate) port in P+T)

MPZ-16.-P+T-B..



Motrac Hydraulik GmbH
Siemensring 87 - D-47877 Willich
fon +49-(0)2154-8162.0 - fax +49-(0)2154-8162.499
e-mail info.miw@motracindustries.com
internet www.motracindustries.com

IZ-830-501-00

(subject to change)



Ordering example:

MPZ - 16A - P+T - B02



Model code:

- | | |
|--|--|
| <p>A design
gauge plate
with mounting interface DIN 24340 form A
sandwichplate design</p> <p>B size and material
16A = aluminum (F37)
16S = steel (9SMnPb28K resp. GGG-40)</p> | <p>C function mode
P+T = with gauge port at P and T</p> <p>D thread size
B02 = BSPP 1/4"
B04 = BSPP 1/2"</p> |
|--|--|

Technical Data:

- note:** dimensions () for variant B03 resp. B04
variant MPZ-16.-P+T-B04 without L channel
- nominal pressure:** 250 bar (A)
350 bar (S)
- weight:** 1.2 / 3.2 kg (A/S)
- included:** 4 pcs. O-ring 22.22 x 2.62
3 pcs. O-ring 9.19 x 2.62