

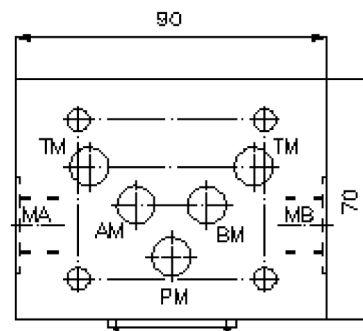
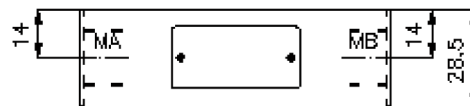
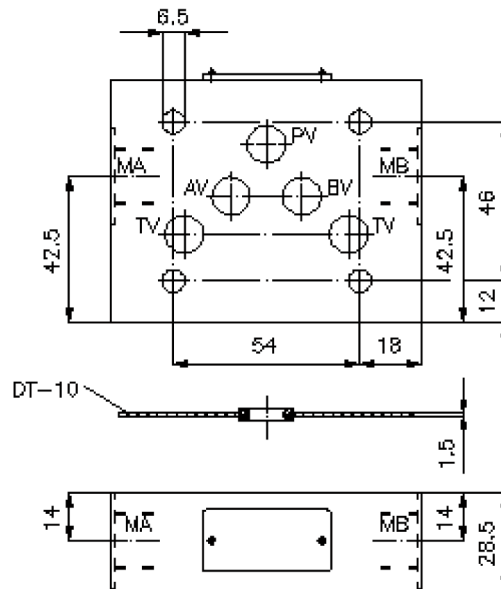
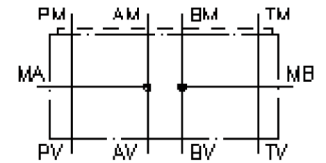
gauge port plate, CETOP 5 ((sandwich plate) port in A+B) MPZ-10.-A+B-B..



Motrac Hydraulik GmbH
Siemensring 87 - D-47877 Willich
fon +49-(0)2154-8162.0 - fax +49-(0)2154-8162.499
e-mail info.miw@motracindustries.com
internet www.motracindustries.com

IZ-830-402-00

(subject to change)



gauge port plate, CETOP 5 ((sandwich plate) port in A+B)

MPZ-10.-A+B-B..



Motrac Hydraulik GmbH
Siemensring 87 - D-47877 Willich
fon +49-(0)2154-8162.0 - fax +49-(0)2154-8162.499
e-mail info.miw@motracindustries.com
internet www.motracindustries.com

IZ-830-402-00

(subject to change)

Ordering example:

MPZ - 10A - A+B - B03
| | | |
A **B** **C** **D**

Model code:

- | | |
|--|--|
| <p>A design
gauge plate
with mounting interface DIN 24340 form A
sandwichplate design</p> <p>B size and material
10A = aluminum (F37)
10S = steel (9SMnPb28K resp. GGG-40)</p> | <p>C function mode
A+B = with gauge port at A and B</p> <p>D thread size
B02 = BSPP 1/4"
B03 = BSPP 3/8"</p> |
|--|--|

Technical Data:

- nominal pressure:** 250 bar (A)
350 bar (S)
- weight:** 0.5 / 1.4 kg (A/S)
- included:** DT-10 = sealing plate with vulcanized O-ring (Viton FPM)