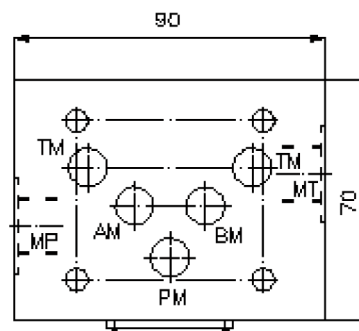
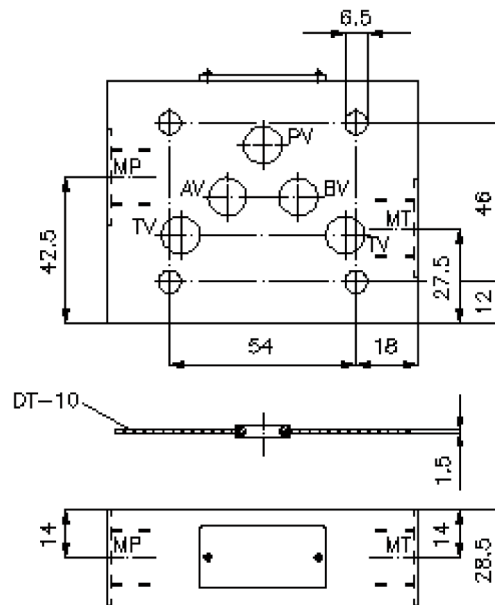
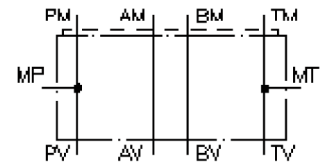


gauge port plate, CETOP 5 ((sandwich plate) port in P+T)

MPZ-10.-P+T-B..

IZ-830-401-00

(subject to change)



gauge port plate, CETOP 5 ((sandwich plate) port in P+T)

MPZ-10.-P+T-B..



Motrac Hydraulik GmbH
Siemensring 87 - D-47877 Willich
fon +49-(0)2154-8162.0 - fax +49-(0)2154-8162.499
e-mail info.miw@motracindustries.com
internet www.motracindustries.com

IZ-830-401-00

(subject to change)



Ordering example:

MPZ - 10A - P+T - B03



Model code:

- | | |
|--|--|
| <p>A design
gauge plate
with mounting interface DIN 24340 form A
sandwichplate design</p> <p>B size and material
10A = aluminum (F37)
10S = steel (9SMnPb28K resp. GGG-40)</p> | <p>C function mode
P+T = with gauge port at P and T</p> <p>D thread size
B02 = BSPP 1/4"
B03 = BSPP 3/8"</p> |
|--|--|

Technical Data:

- | | |
|--------------------------|--|
| nominal pressure: | 250 bar (A)
350 bar (S) |
| weight: | 0.5 / 1.4 kg (A/S) |
| included: | DT-10 = sealing plate with vulcanized O-ring (Viton FPM) |