

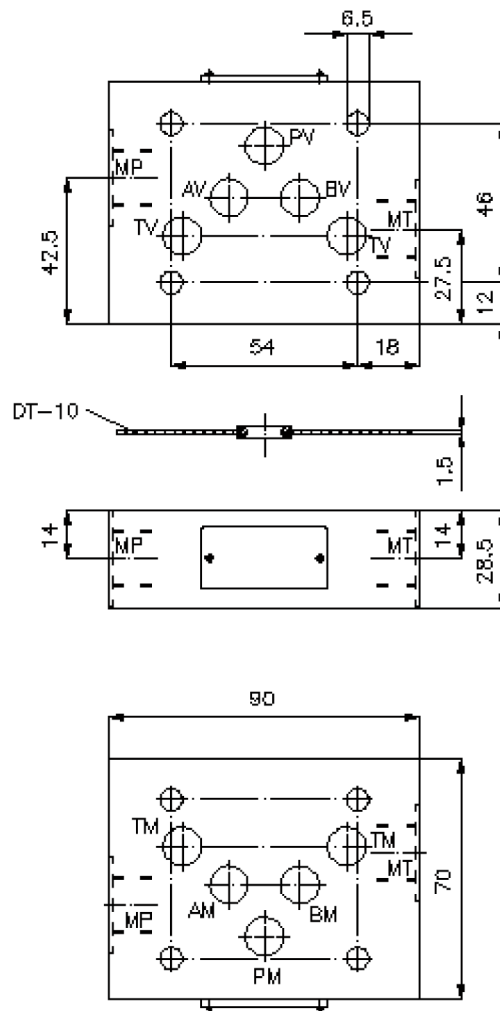
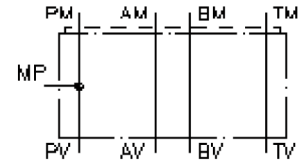
# gauge port plate, CETOP 5 ((sandwich plate) port in P) MPZ-10.-P-B..



Motrac Hydraulik GmbH  
Siemensring 87 - D-47877 Willich  
fon +49-(0)2154-8162.0 - fax +49-(0)2154-8162.499  
e-mail info.miw@motracindustries.com  
internet www.motracindustries.com

IZ-830-400-00

(subject to change)



# gauge port plate, CETOP 5 ((sandwich plate) port in P)

MPZ-10.-P-B..



Motrac Hydraulik GmbH  
Siemensring 87 - D-47877 Willich  
fon +49-(0)2154-8162.0 - fax +49-(0)2154-8162.499  
e-mail info.miw@motracindustries.com  
internet www.motracindustries.com

IZ-830-400-00

(subject to change)



## Ordering example:

MPZ - 10A - P - B04  
|        |        |        |  
**A**    **B**    **C**    **D**

## Model code:

- A design**  
gauge plate  
with mounting interface DIN 24340 form A  
sandwichplate design
- B size and material**  
10A = aluminum (F37)  
10S = steel (9SMnPb28K resp. GGG-40)

- C function mode**  
P = with gauge port at P
- D thread size**  
B02 = BSPP 1/4"  
B03 = BSPP 3/8"

## Technical Data:

- nominal pressure:** 250 bar (A)  
350 bar (S)
- weight:** 0.5 / 1.4 kg (A/S)
- included:** DT-10 = sealing plate with vulcanized O-ring (Viton FPM)