

adapter plate CETOP 10 to CETOP 8 (sandwich plate)

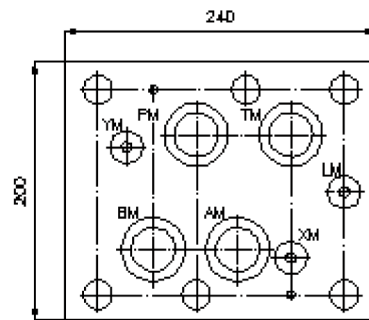
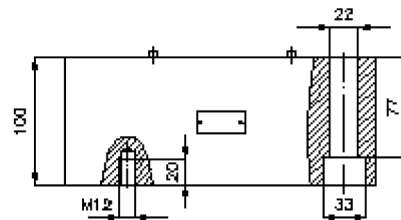
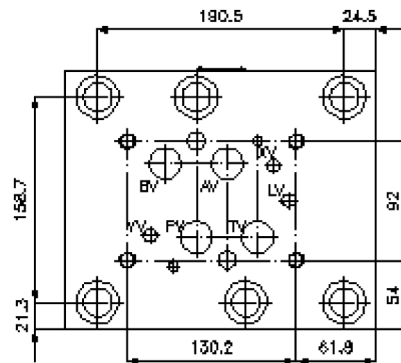
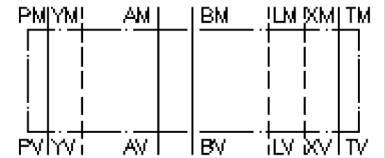
AP-32./25.



Motrac Hydraulik GmbH
Siemensring 87 - D-47877 Willich
fon +49-(0)2154-8162.0 - fax +49-(0)2154-8162.499
e-mail info.mhw@motrac-hydraulics.com
internet www.motrac-hydraulics.com

IZ-810-700-00

(subject to change)



adapter plate CETOP 10 to CETOP 8 (sandwich plate)

AP-32./25.



Motrac Hydraulik GmbH
Siemensring 87 - D-47877 Willich
fon +49-(0)2154-8162.0 - fax +49-(0)2154-8162.499
e-mail info.mhw@motrac-hydraulics.com
internet www.motrac-hydraulics.com

IZ-810-700-00

(subject to change)

Ordering example:

AP - 32S/25S



Model code:

A **design**
adapter-plate
with mounting interface DIN 24340 form A

B **size and material**
reduction from CETOP 10 to CETOP 8
32A/25A = aluminum (F37)
32S/25S = steel (9SMnPb28K resp. GGG-40)

Technical Data:

nominal pressure: 250 bar (A)
350 bar (S)

weight: 13.13 / 36.36 kg (A/S)

included: 4 pcs. O-Ring 42.85 x 3.53
3 pcs. O-Ring 20.29 x 2.62