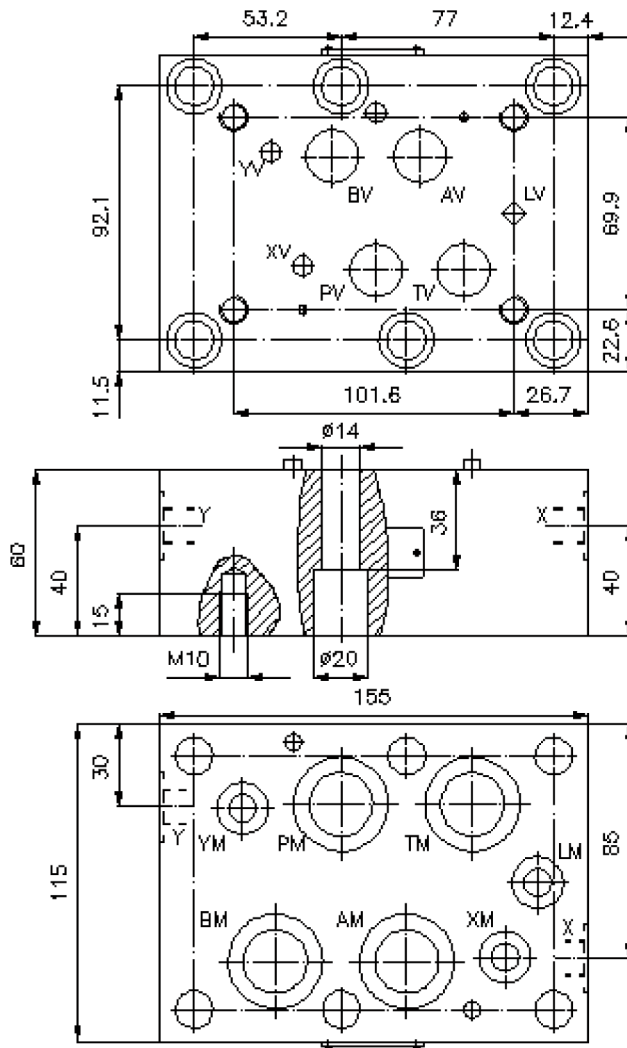
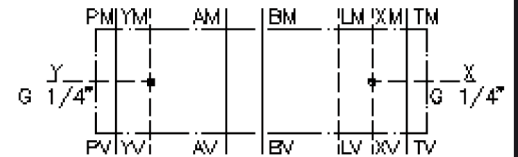


adapter plate CETOP 8 to CETOP 7 (sandwich plate) XY extern BSPP 1/4"

AP-25./16.-XY-B02

IZ-810-601-00

(subject to change)



adapter plate CETOP 8 to CETOP 7 (sandwich plate) XY extern BSPP 1/4"

AP-25./16.-XY-B02



Motrac Hydraulik GmbH
Siemensring 87 - D-47877 Willich
fon +49-(0)2154-8162.0 - fax +49-(0)2154-8162.499
e-mail info.mhw@motrac-hydraulics.com
internet www.motrac-hydraulics.com

IZ-810-601-00

(subject to change)

Ordering example:

AP - 25S/16S XY - B02
| | | |
A **B** **C** **D**

Model code:

- | | |
|---|--|
| <p>A design
adapter-plate
with mounting interface DIN 24340 form A</p> <p>B size and material
reduction from CETOP 8 to CETOP 7
25A/16A = aluminum (F37)
25S/16S = steel (9SMnPb28K resp. GGG-40)</p> | <p>C function mode
XY = mit X und Y Bohrung</p> <p>D thread size
B02 = BSPP 1/4"</p> |
|---|--|

Technical Data:

nominal pressure: 210 bar (A)
350 bar (S)

weight: 3.1 / 6.3 kg (A/S)

included: 4 pcs. O-Ring 28.17 x 3.53
3 pcs. O-Ring 14.00 x 2.65