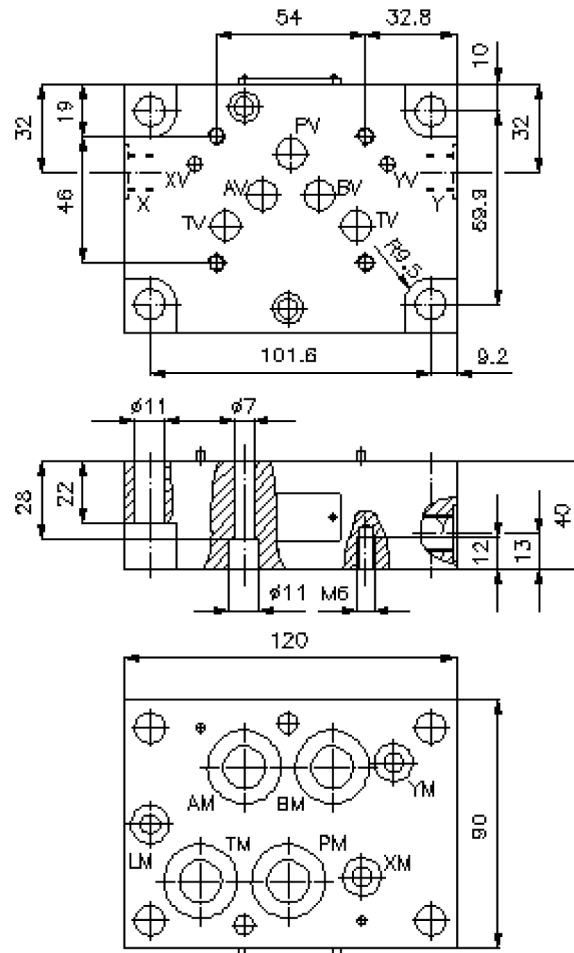
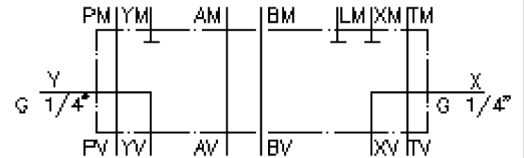


adapter plate CETOP 7 to CETOP 5 (sandwich plate) CETOP 5-XY extern

AP-16./10.-XY-B02

IZ-810-501-00

(subject to change)



adapter plate CETOP 7 to CETOP 5 (sandwich plate) CETOP 5-XY extern

AP-16./10.-XY-B02



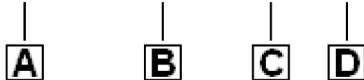
Motrac Hydraulik GmbH
Siemensring 87 - D-47877 Willich
fon +49-(0)2154-8162.0 - fax +49-(0)2154-8162.499
e-mail info.mhw@motrac-hydraulics.com
internet www.motrac-hydraulics.com

IZ-810-501-00

(subject to change)

Ordering example:

AP - 16S/10S - XY - B02



Model code:

- | | |
|---|--|
| <p>A design
adapter-plate
with mounting interface DIN 24340 form A</p> <p>B size and material
reduction from CETOP 7 to CETOP 5
16A/10A = aluminum (F37)
16S/10S = steel (9SMnPb28K resp. GGG-40)</p> | <p>C function mode
XY = mit X und Y Bohrung</p> <p>D thread size
B02 = BSPP 1/4"</p> |
|---|--|

Technical Data:

- nominal pressure:** 210 bar (A)
350 bar (S)
- weight:** 1.3 / 2.7 kg (A/S)