

adapter plate CETOP 7 to CETOP 5 (sandwich plate) for 4 way valve

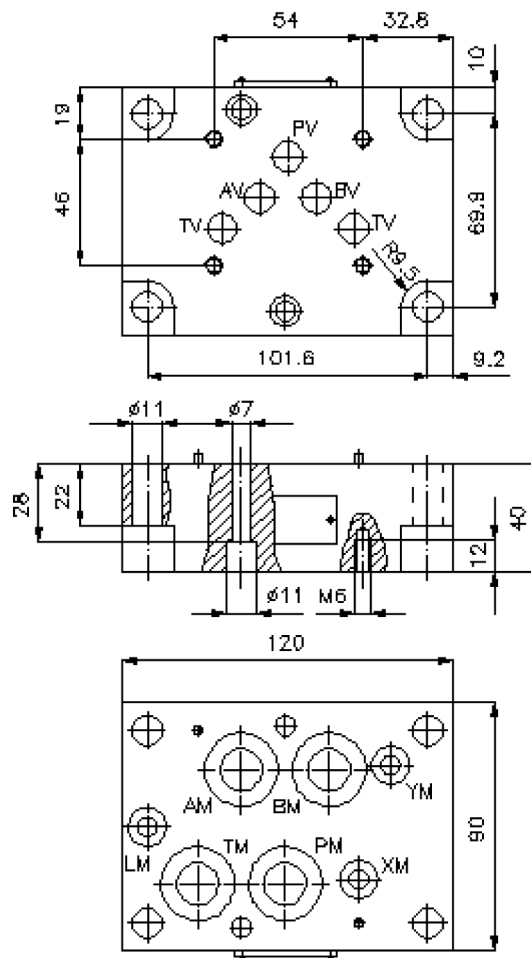
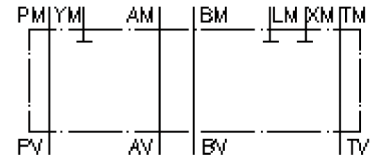
AP-16./10.



Motrac Hydraulik GmbH
Siemensring 87 - D-47877 Willich
fon +49-(0)2154-8162.0 - fax +49-(0)2154-8162.499
e-mail info.mhw@motrac-hydraulics.com
internet www.motrac-hydraulics.com

IZ-810-500-00

(subject to change)



adapter plate CETOP 7 to CETOP 5 (sandwich plate) for 4 way valve

AP-16./10.



Motrac Hydraulik GmbH
Siemensring 87 - D-47877 Willich
fon +49-(0)2154-8162.0 - fax +49-(0)2154-8162.499
e-mail info.mhw@motrac-hydraulics.com
internet www.motrac-hydraulics.com

IZ-810-500-00

(subject to change)

Ordering example:

AP - 16S/10S



Model code:

A **design**
adapter-plate
with mounting interface DIN 24340 form A

B **size and material**
reduction from CETOP 7 to CETOP 5
16A/10A = aluminum (F37)
16S/10S = steel (9SMnPb28K resp. GGG-40)

Technical Data:

nominal pressure: 210 bar (A)
350 bar (S)

weight: 1.3 / 2.7 kg (A/S)

included: 4 pcs. O-ring 22.22 x 2.62
3 pcs. O-ring 9.19 x 2.62