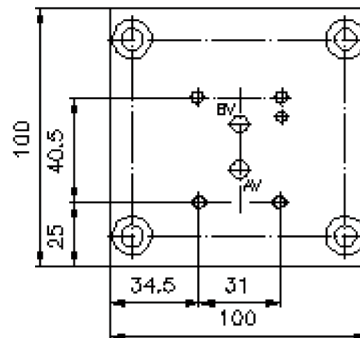
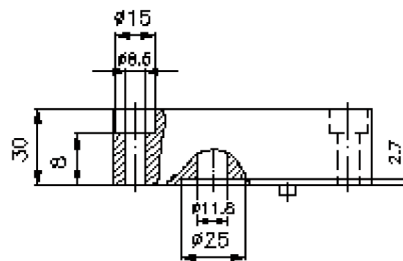
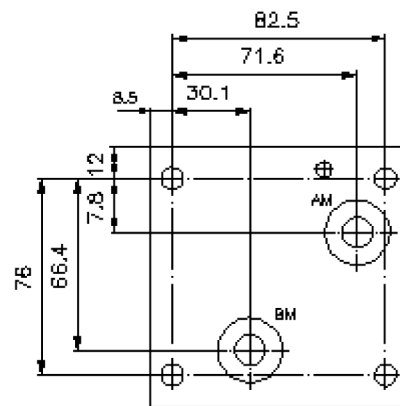
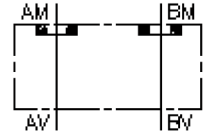


adapter plate CETOP 5 to CETOP 3 (sandwich plate) for flow regulator valve

AP-10./06.-SV

IZ-810-420-00

(subject to change)



adapter plate CETOP 5 to CETOP 3 (sandwich plate) for flow regulator valve

AP-10./06.-SV



Motrac Hydraulik GmbH
Siemensring 87 - D-47877 Willich
fon +49-(0)2154-8162.0 - fax +49-(0)2154-8162.499
e-mail info.mhw@motrac-hydraulics.com
internet www.motrac-hydraulics.com

IZ-810-420-00

(subject to change)

Ordering example:

AP - 10A/06A - SV
| | |
A **B** **C**

Model code:

- A** **design**
adapter-plate
for 2 way flow regulator valve
- B** **size and material**
reduction from CETOP 5 to CETOP 3
10A/06A = aluminum (F37)
10S/06S = steel (9SMnPb28K resp. GGG-40)
- C** **function mode**
SV = flow regulator valve CETOP 3

Technical Data:

- note:** These multi-purpose-adapter-plate MGAP-10S/06S-.. have a cavity type C-10-2, and can be completed with either Modular/EATON- or Command Controls-screw-in valves.
- nominal pressure:** 210 bar (A)
350 bar (S)
- weight:** 0.8 / 1.7 kg (A/S)
- included:** included
2 pcs. O-Ring 18.64 x 3.53