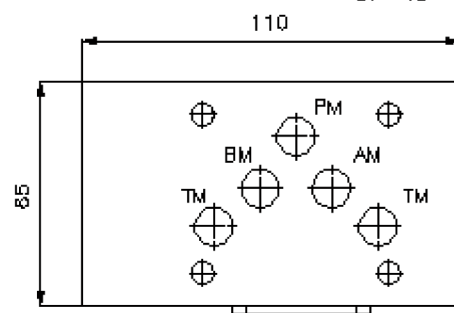
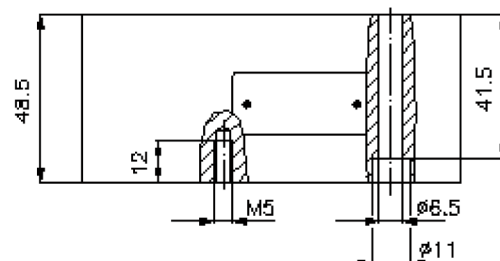
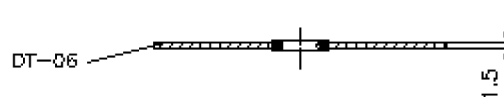
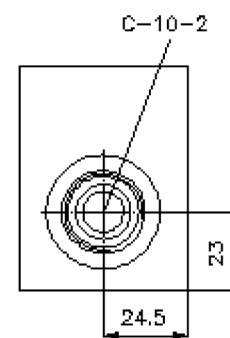
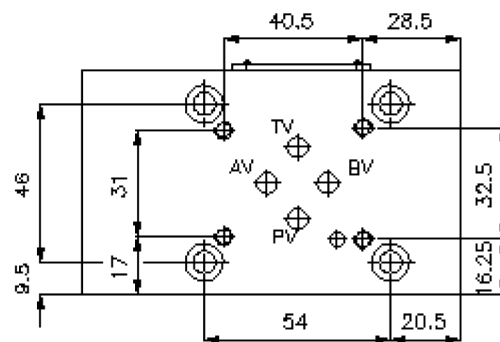
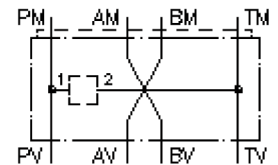


# multiple adapter plate CETOP 5/3 (sandwich plate) with C-10-2 from P to T

MGAP-10./06.-PT

IZ-810-411-00

(subject to change)



# multiple adapter plate CETOP 5/3 (sandwich plate) with C-10-2 from P to T MGAP-10./06.-PT



Motrac Hydraulik GmbH  
Siemensring 87 - D-47877 Willich  
fon +49-(0)2154-8162.0 - fax +49-(0)2154-8162.499  
e-mail info.mhw@motrac-hydraulics.com  
internet www.motrac-hydraulics.com

IZ-810-411-00

(subject to change)

## Ordering example:

MGAP - 10S/06S - PT



## Model code:

**A design**  
multipurpose adapter plate  
with mounting interface DIN 24340 form A  
for 4 way valve

**B size and material**  
reduction from CETOP 5 to CETOP 3  
10A/06A = aluminum (F37)  
10S/06S = steel (9SMnPb28K resp. GGG-40)

**C function mode**  
PT = P with T connected

## Technical Data:

**note:** These multi-purpose-adapter-plate MGAP-10S/06S-.. have a cavity type C-10-2, and can be completed with either Modular/EATON- or Command Controls-screw-in valves.

**nominal pressure:** 210 bar (A)  
350 bar (S)

**weight:** 1.2 / 2.6 kg (A/S)

**included:** DT-10 = sealing plate with vulcanized O-ring (Viton FPM)