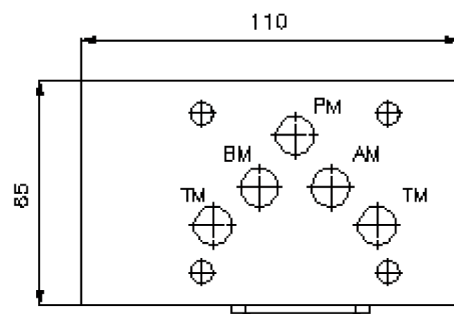
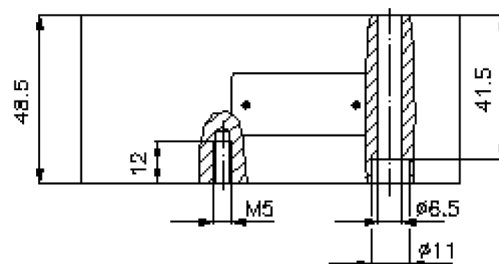
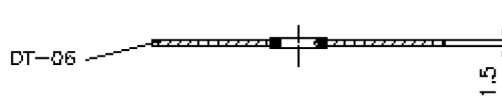
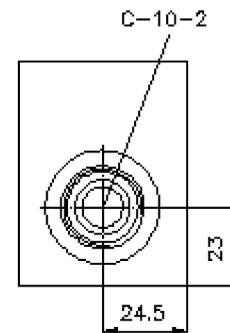
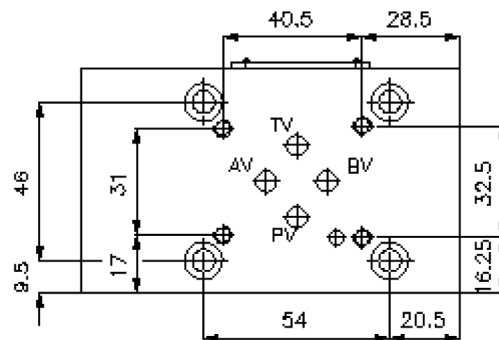
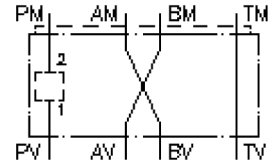


multiple adapter plate CETOP 5/3 (sandwich plate) with C-10-2 in P

MGAP-10./06.-PP

IZ-810-410-00

(subject to change)



multiple adapter plate CETOP 5/3 (sandwich plate) with C-10-2 in P

MGAP-10./06.-PP



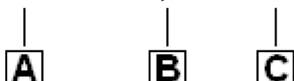
Motrac Hydraulik GmbH
Siemensring 87 - D-47877 Willich
fon +49-(0)2154-8162.0 - fax +49-(0)2154-8162.499
e-mail info.mhw@motrac-hydraulics.com
internet www.motrac-hydraulics.com

IZ-810-410-00

(subject to change)

Ordering example:

MGAP - 10S/06S - PP



Model code:

- A design**
multipurpose adapter plate
with mounting interface DIN 24340 form A
for 4 way valve
- B size and material**
reduction from CETOP 5 to CETOP 3
10A/06A = aluminum (F37)
10S/06S = steel (9SMnPb28K resp. GGG-40)
- C function mode**
PP = P with P connected

Technical Data:

- note:** These multi-purpose-adapter-plate MGAP-10S/06S-.. have a cavity type C-10-2, and can be completed with either Modular/EATON- or Command Controls-screw-in valves.
- nominal pressure:** 210 bar (A)
350 bar (S)
- weight:** 1.2 / 2.6 kg (A/S)
- included:** DT-10 = sealing plate with vulcanized O-ring (Viton FPM)