

adapter plate CETOP 5 to CETOP 3 (sandwich plate) for 4 way valve

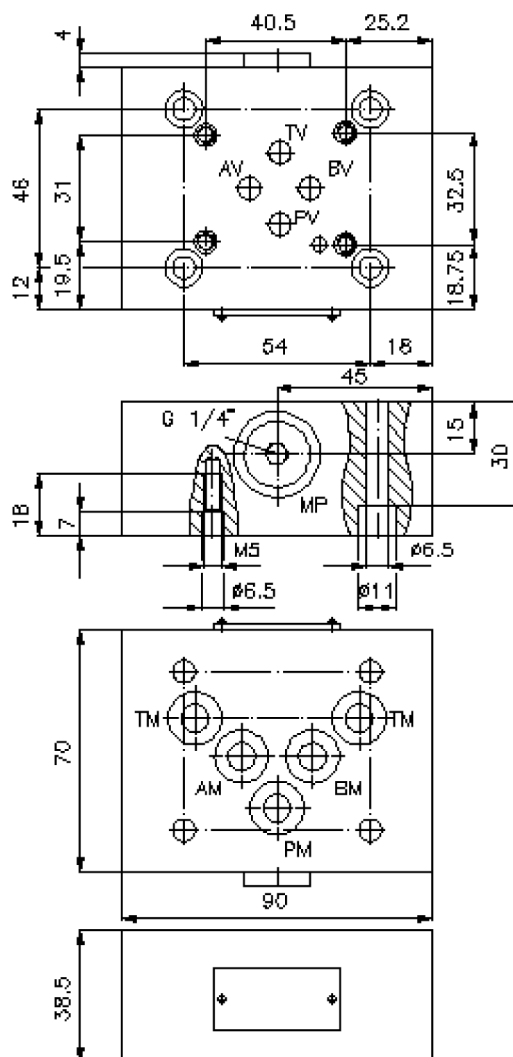
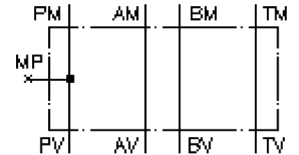
APR-10./06.



Motrac Hydraulik GmbH
Siemensring 87 - D-47877 Willich
fon +49-(0)2154-8162.0 - fax +49-(0)2154-8162.499
e-mail info.mhw@motrac-hydraulics.com
internet www.motrac-hydraulics.com

IZ-810-400-00

(subject to change)



adapter plate CETOP 5 to CETOP 3 (sandwich plate) for 4 way valve

APR-10./06.



Motrac Hydraulik GmbH
Siemensring 87 - D-47877 Willich
fon +49-(0)2154-8162.0 - fax +49-(0)2154-8162.499
e-mail info.mhw@motrac-hydraulics.com
internet www.motrac-hydraulics.com

IZ-810-400-00

(subject to change)

Ordering example:

APR - 10S/06S-VITON



Model code:

A **design**
adapter-plate
with mounting interface DIN 24340 form A
mounting

B **size and material**
reduction from CETOP 5 to CETOP 3
10A/06A = aluminum (F37)
10S/06S = steel (9SMnPb28K resp. GGG-40)

Technical Data:

nominal pressure: 250 bar (A)
350 bar (S)

weight: 0.7 / 1.8 kg (A/S)

included: 5 pcs. O-Ring 12.42 x 1.78