

3-way pressure compensator sandwich plate CETOP 5 ((fixed) in T without L-hole)

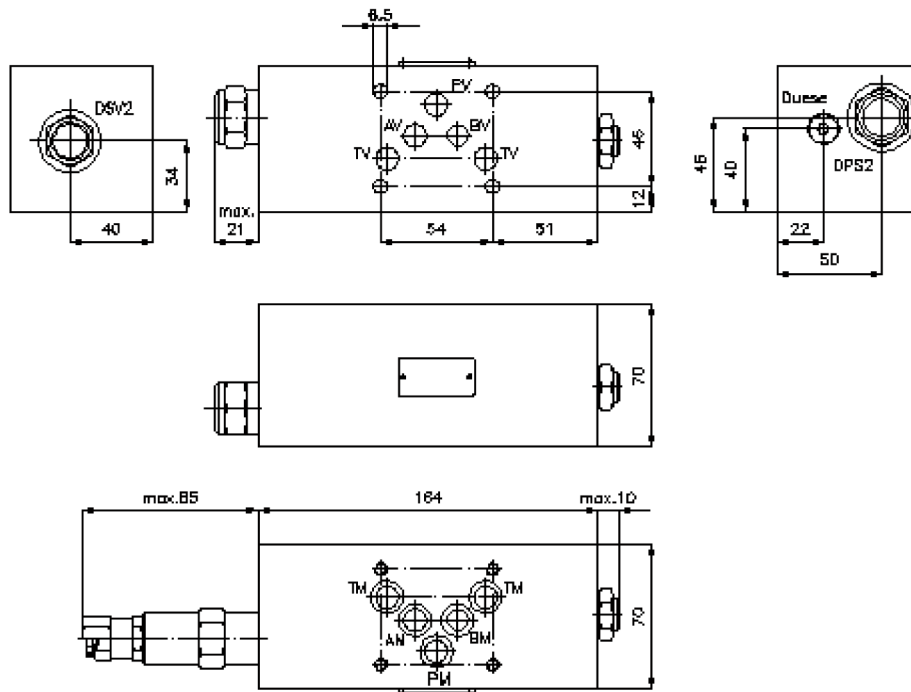
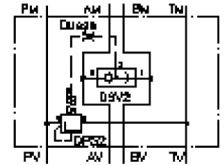
DWMZ-10.-3P/10-P.-...



Motrac Hydraulik GmbH
 Siemensring 87 - D-47877 Willich
 fon +49-(0)2154-8162.0 - fax +49-(0)2154-8162.499
 e-mail info.miw@motracindustries.com
 internet www.motracindustries.com

IZ-750-400-00

(subject to change)



3-way pressure compensator sandwich plate CETOP 5 ((fixed) in T without L-hole)

DWMZ-10.-3P/10-P-.-...



Motrac Hydraulik GmbH
Siemensring 87 - D-47877 Willich
fon +49-(0)2154-8162.0 - fax +49-(0)2154-8162.499
e-mail info.miw@motracindustries.com
internet www.motracindustries.com

IZ-750-400-00

(subject to change)

Ordering example:

DWMZ - 10A - 3P / 10 - P - F - 080

A
 B
 C
 D
 E
 F
 G

Model code:

- | | |
|---|---|
| <p>A design
pressure compensator
with mounting interface DIN 24340 form A
sandwichplate design</p> <p>B size and material
10A = aluminum (F37)
10S = steel (9SMnPb28K resp. GGG-40)</p> <p>C function mode
P = load sensing Element
base position closed</p> | <p>D logic element
10 = DPS2-10.-F-..</p> <p>E spool type
P = load sensing Element
base position closed</p> <p>F adjustment
F = fixed</p> <p>G pressure range (DPS2)
080 = 5.5 bar
160 = 11.0 bar</p> |
|---|---|

Technical Data:

nominal pressure:	250 bar (A) 275 bar (S)
nominal flow:	60 l/min
weight:	2.5 / 5.2 kg (A/S)
shuttle valve:	DSV2-08.-B-0 see datasheet no. MC-320-081-00
logic element valve:	DPS2-10.-P-.. see datasheet no. MD-750-101-00
included:	5 pcs. O-ring 12.42 x 1.78