

# 2-way pressure compensator sandwich plate CETOP 7 ((fixed) in T with X+Y-hole)

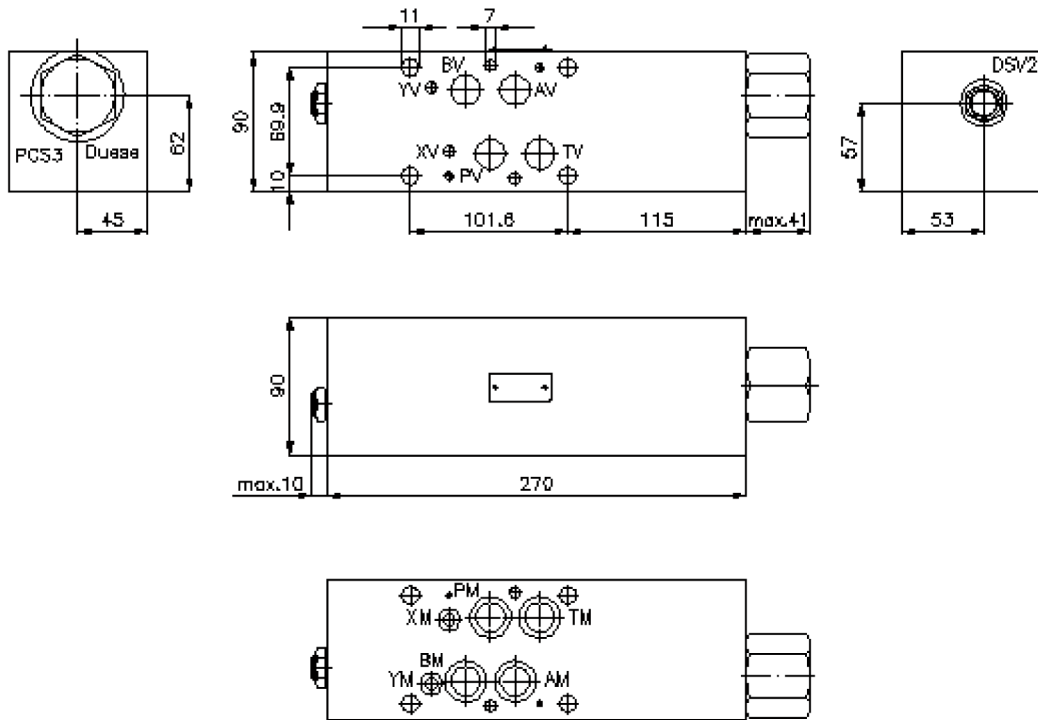
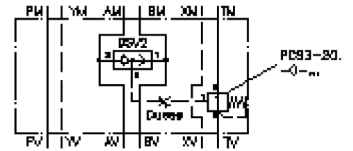
DWMZ-16.-T-F-...



Motrac Hydraulik GmbH  
Siemensring 87 - D-47877 Willich  
fon +49-(0)2154-8162.0 - fax +49-(0)2154-8162.499  
e-mail info.miw@motracindustries.com  
internet www.motracindustries.com

IZ-730-500-00

(subject to change)



# 2-way pressure compensator sandwich plate CETOP 7 ((fixed) in T with X+Y-hole)

DWMZ-16.-T-F-...



Motrac Hydraulik GmbH  
Siemensring 87 - D-47877 Willich  
fon +49-(0)2154-8162.0 - fax +49-(0)2154-8162.499  
e-mail info.miw@motracindustries.com  
internet www.motracindustries.com

IZ-730-500-00

(subject to change)

## Ordering example:

DWMZ - 16A - T - F - 080

**A**      **B**      **C**      **D**      **E**

## Model code:

**A**

### design

pressure compensator  
with mounting interface DIN 24340 form A  
sandwichplate design

**B**

### size and material

16A = aluminum (F37)  
16S = steel (9SMnPb28K resp. GGG-40)

**C**

### function mode

T = in T acting

**D**

### adjustment

F = fixed

**E**

### pressure range (PCS3)

080 = 5.5 bar  
160 = 11.0 bar

## Technical Data:

### note:

The at the symbol shown orifice can be used as required.  
The matching bore (port 1 of the PCS3) will have the thread size M 6.

### nominal pressure:

210 bar (A)  
350 bar (S)

### nominal flow:

190 l/min

### weight:

6.2 / 12.6 kg (A/S)

### shuttle valve:

DSV2-08.-B-0 see datasheet no. [MC-320-081-00](#)

### logic element valve:

PCS3-20.-0-.. see datasheet no. [MF-610-200-00](#)

### included:

4 pcs. O-ring 22.42 x 2.62  
1 pc. O-ring 9.19 x 2.62