

2-way pressure compensator sandwich plate CETOP 5 ((fixed) in T with X+Y-hole)

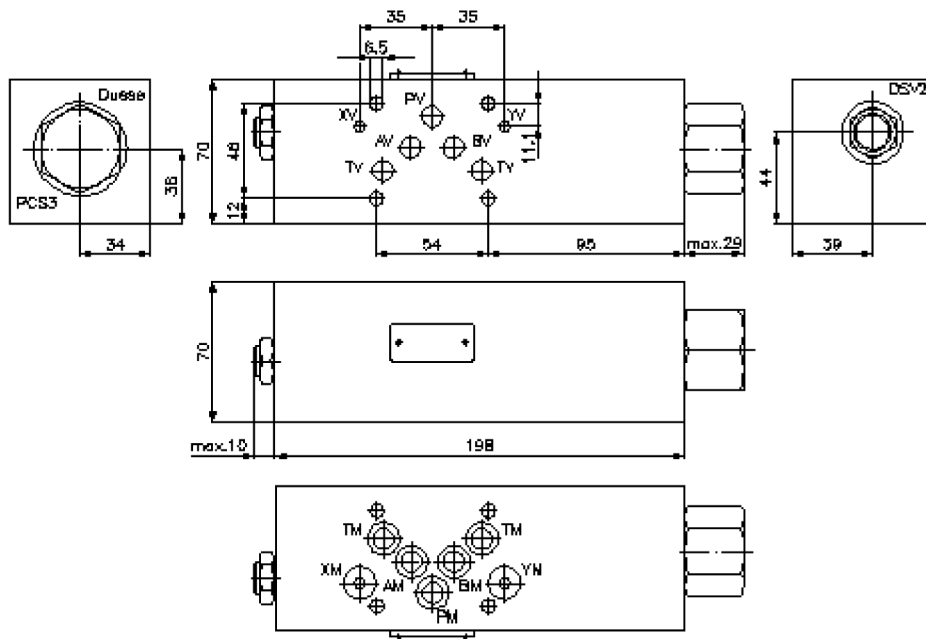
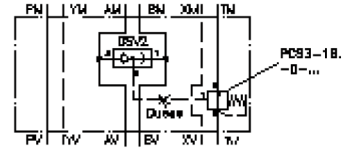
DWMZ-10.-T/16-F-...



Motrac Hydraulik GmbH
Siemensring 87 - D-47877 Willich
fon +49-(0)2154-8162.0 - fax +49-(0)2154-8162.499
e-mail info.miw@motracindustries.com
internet www.motracindustries.com

IZ-730-410-00

(subject to change)



2-way pressure compensator sandwich plate CETOP 5 ((fixed) in T with X+Y-hole)

DWMZ-10.-T/16-F-...



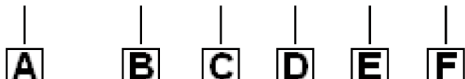
Motrac Hydraulik GmbH
Siemensring 87 - D-47877 Willich
fon +49-(0)2154-8162.0 - fax +49-(0)2154-8162.499
e-mail info.miw@motracindustries.com
internet www.motracindustries.com

IZ-730-410-00

(subject to change)

Ordering example:

DWMZ - 10A - T / 16 - F - 080



Model code:

- | | |
|--|---|
| A design
pressure compensator
with mounting interface DIN 24340 form A
sandwichplate design | D pressure compensator
16 = DPS2-16.-F-.. |
| B size and material
10A = aluminum (F37)
10S = steel (9SMnPb28K resp. GGG-40) | E adjustment
F = fixed |
| C function mode
T = in T acting | F pressure range (PCS3)
040 = 2.8 bar
080 = 5.5 bar
160 = 11.0 bar |

Technical Data:

- | | |
|------------------------------------|---|
| note: | The at the symbol shown orifice can be used as required.
The matching bore (port 1 of the PCS3) will have the thread size M 6. |
| nominal pressure: | 210 bar (A)
350 bar (S) |
| nominal flow: | 115 l/min |
| weight: | 2.8 / 5.8 kg (A/S) |
| shuttle valve: | DSV2-08.-B-0 see datasheet no. MC-320-081-00 |
| pressure compensator valve: | PCS3-16.-0-.. see datasheet no. MF-610-160-00 |
| included: | 7 pcs. O-ring 12.42 x 1.78 |