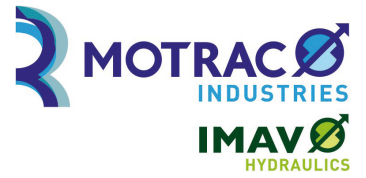


2-way pressure compensator sandwich plate CETOP 3 ((fixed) in T)

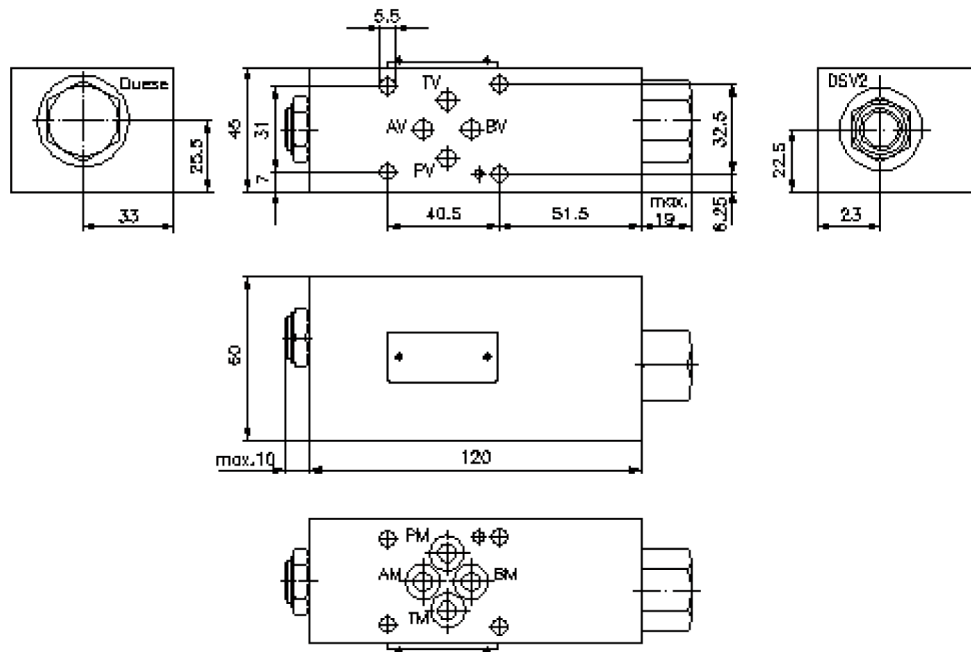
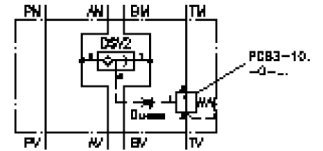
DWMZ-06.-T-F-.-...



Motrac Hydraulik GmbH
Siemensring 87 - D-47877 Willich
fon +49-(0)2154-8162.0 - fax +49-(0)2154-8162.499
e-mail info.miw@motracindustries.com
internet www.motracindustries.com

IZ-730-200-00

(subject to change)



2-way pressure compensator sandwich plate CETOP 3 ((fixed) in T) DWMZ-06.-T-F-.-...



Motrac Hydraulik GmbH
Siemensring 87 - D-47877 Willich
fon +49-(0)2154-8162.0 - fax +49-(0)2154-8162.499
e-mail info.miw@motracindustries.com
internet www.motracindustries.com

IZ-730-200-00

(subject to change)

Ordering example:

DWMZ - 06A - T - F - 080
| | | | |
A **B** **C** **D** **E**

Model code:

- | | |
|--|---|
| A design
pressure compensator
with mounting interface DIN 24340 form A
sandwichplate design | C function mode
T = in T acting |
| B size and material
06A = aluminum (F37)
06S = steel (9SMnPb28K resp. GGG-40) | D adjustment
F = fixed |
| | E pressure range (PCS3)
040 = 2.8 bar
080 = 5.5 bar
160 = 11.0 bar |

Technical Data:

- note:** The at the symbol shown orifice can be used as required.
The matching bore (port 1 of the PCS3) will have the thread size M 6.
- nominal pressure:** 210 bar (A)
350 bar (S)
- nominal flow:** 40 l/min
- weight:** 0.8 / 1.8 kg (A/S)
- shuttle valve:** DSV2-08.-B-0 see datasheet no. [MC-320-081-00](#)
- pressure compensator valve:** PCS3-10.-0-.. see datasheet no. [MF-610-100-00](#)
- included:** 4 pcs. O-ring 9.25 x 1.78