

2-way pressure compensator sandwich plate CETOP 7 ((fixed) in P with X+Y-hole)

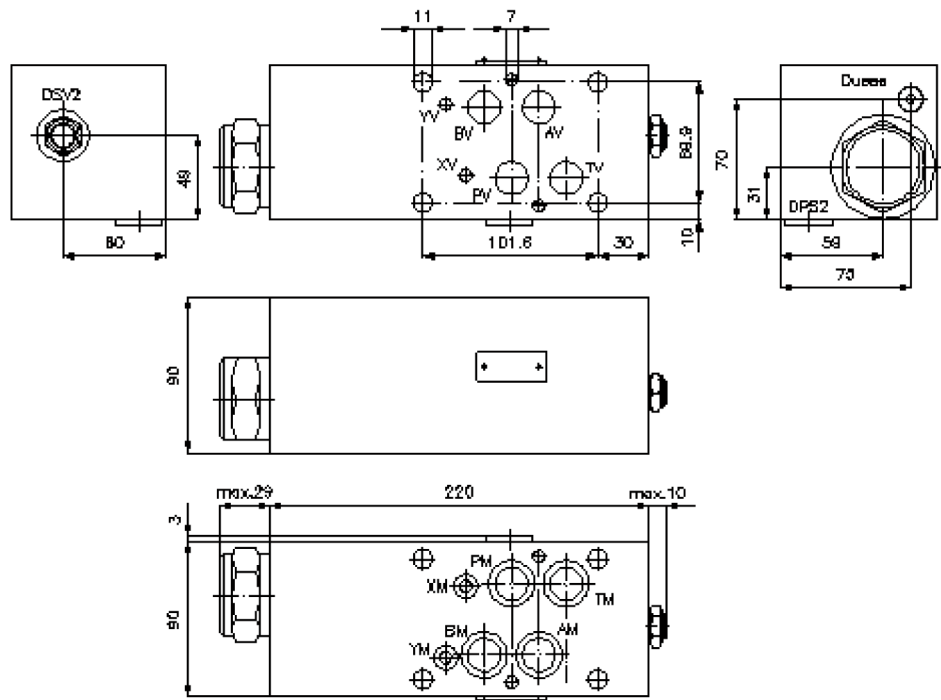
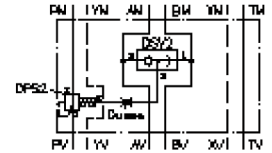
DWMZ-16A-P-F-F-...



Motrac Hydraulik GmbH
Siemensring 87 - D-47877 Willich
fon +49-(0)2154-8162.0 - fax +49-(0)2154-8162.499
e-mail info.miw@motracindustries.com
internet www.motracindustries.com

IZ-710-500-00

(subject to change)



2-way pressure compensator sandwich plate CETOP 7 ((fixed) in P with X+Y-hole)

DWMZ-16A-P-F-F-...



Motrac Hydraulik GmbH
Siemensring 87 - D-47877 Willich
fon +49-(0)2154-8162.0 - fax +49-(0)2154-8162.499
e-mail info.miw@motracindustries.com
internet www.motracindustries.com

IZ-710-500-00

(subject to change)

Ordering example:

DWMZ - 16A - P - F - F - 080

A	B	C	D	E	F

Model code:

- | | |
|--|---|
| A design
pressure compensator
with mounting interface DIN 24340 form A
sandwichplate design | D spool type
F = flow regulation (hydrostatic)
base position open |
| B size and material
16A = aluminum (F37) | E adjustment
F = fixed |
| C function mode
P = in P acting | F pressure range (DPS2)
080 = 5.5 bar
160 = 11.0 bar |

Technical Data:

nominal pressure:	250 bar
nominal flow:	300 l/min
weight:	5.1 kg
shuttle valve:	DSV2-08.-B-0 see datasheet no. MC-320-081-00
logic element valve:	DPS2-20.-F-.. see datasheet no. MD-750-201-00
included:	4 pcs. O-ring 22.42 x 2.62 1 pc. O-ring 9.19 x 2.62