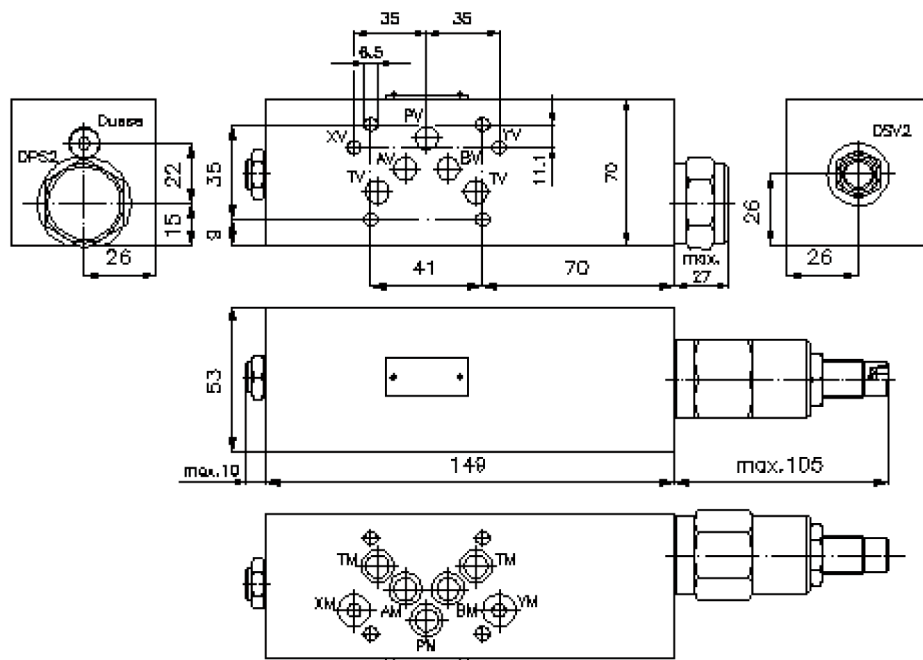
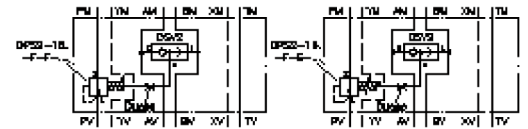


# 2-way pressure compensator sandwich plate CETOP 5 ((fixed) in P with X+Y-hole)

DWMZ-10A-P/16-F-F-...

IZ-710-410-00

(subject to change)



# 2-way pressure compensator sandwich plate CETOP 5 ((fixed) in P with X+Y-hole)

DWMZ-10A-P/16-F-F-...



Motrac Hydraulik GmbH  
Siemensring 87 - D-47877 Willich  
fon +49-(0)2154-8162.0 - fax +49-(0)2154-8162.499  
e-mail info.miw@motracindustries.com  
internet www.motracindustries.com

IZ-710-410-00

(subject to change)

## Ordering example:

DWMZ - 10A - P / 16 - F - F - 080

**A**      **B**      **C**      **D**      **E**      **F**      **G**

## Model code:

- |  |   |
|--|---|
| <b>A</b> <b>design</b><br>pressure compensator<br>with mounting interface DIN 24340 form A<br>sandwichplate design | <b>E</b> <b>spool type</b><br>F = flow regulation (hydrostatic)<br>base position open |
| <b>B</b> <b>size and material</b><br>10A = aluminum (F37)  | <b>F</b> <b>adjustment</b><br>F = fixed   |
| <b>C</b> <b>function mode</b><br>P = in P acting   | <b>G</b> <b>pressure range (DPS2)</b><br>080 = 5.5 bar<br>160 = 11.0 bar              |
| <b>D</b> <b>pressure compensator</b><br>16 = DPS2-16.-F-..   |   |

## Technical Data:

<b>nominal pressure:</b>	250 bar
<b>nominal flow:</b>	190 l/min
<b>weight:</b>	2.4 kg
<b>shuttle valve:</b>	DSV2-08.-B-0 see datasheet no. <a href="#">MC-320-081-00</a>
<b>logic element valve:</b>	DPS2-16.-F-.. see datasheet no. <a href="#">MD-750-161-00</a>
<b>included:</b>	7 pcs. O-ring 12.42 x 1.78