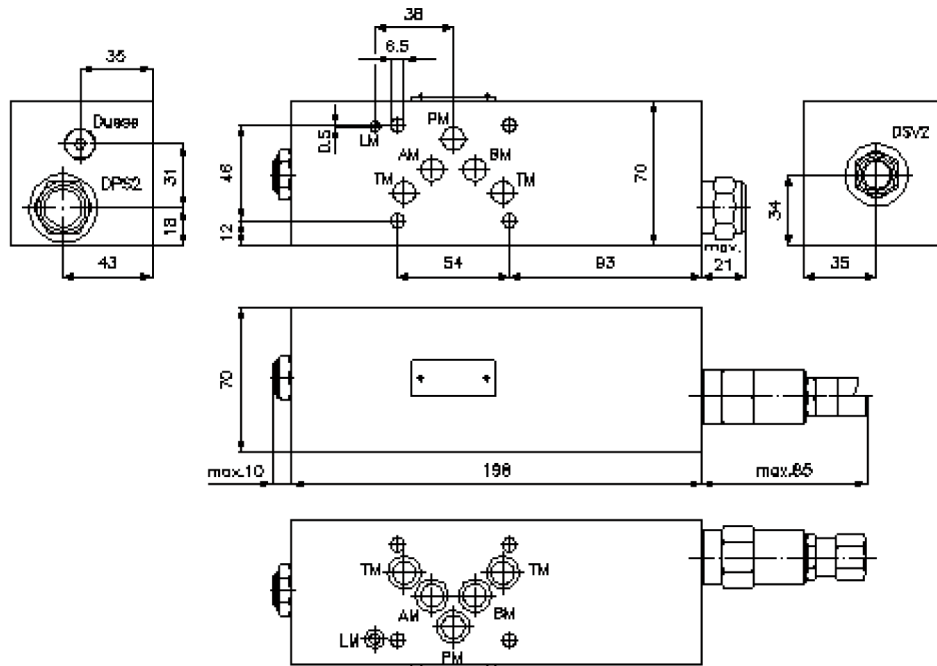
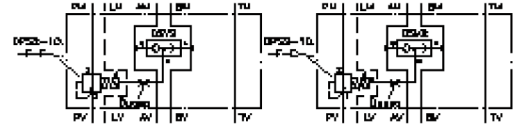


2-way pressure compensator sandwich plate CETOP 5 ((fixed) in P with L-hole)

DWMZ-10A-P/10-F-F-...

IZ-710-400-00

(subject to change)



2-way pressure compensator sandwich plate CETOP 5 ((fixed) in P with L-hole)

DWMZ-10A-P/10-F-F-...



Motrac Hydraulik GmbH
Siemensring 87 - D-47877 Willich
fon +49-(0)2154-8162.0 - fax +49-(0)2154-8162.499
e-mail info.miw@motracindustries.com
internet www.motracindustries.com

IZ-710-400-00

(subject to change)

Ordering example:

DWMZ - 10A - P / 10 - F - F - 080

A
 B
 C
 D
 E
 F
 G

Model code:

- | | |
|--|---|
| <p>A design
pressure compensator
with mounting interface DIN 24340 form A
sandwichplate design</p> <p>B size and material
10A = aluminum (F37)</p> <p>C function mode
P = in P acting</p> <p>D pressure compensator
10 = DPS2-10.-F-..</p> | <p>E spool type
F = flow regulation (hydrostatic)
base position open</p> <p>F adjustment
F = fixed</p> <p>G pressure range (DPS2)
080 = 5.5 bar
160 = 11.0 bar</p> |
|--|---|

Technical Data:

nominal pressure:	250 bar
nominal flow:	60 l/min
weight:	2.2 kg
shuttle valve:	DSV2-08.-B-0 see datasheet no. MC-320-081-00
logic element valve:	DPS2-10.-F-.. see datasheet no. MD-750-101-00
included:	5 pcs. O-ring 12.42 x 1.78 1 pc. O-ring 6.07 x 1.78