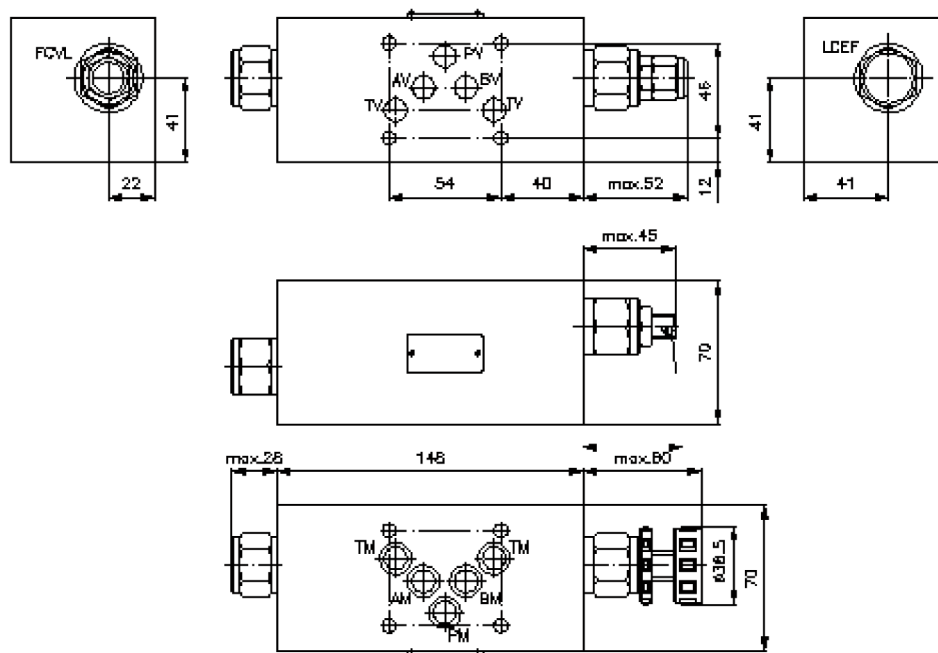
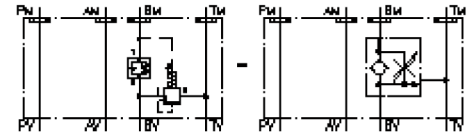


# 3-way flow control valve CETOP 5 ((sandwich plate) in B to T)

SR3Z-10.-BVL.

IZ-670-450-00

(subject to change)



# 3-way flow control valve CETOP 5 ((sandwich plate) in B to T)

SR3Z-10.-BVL



Motrac Hydraulik GmbH  
Siemensring 87 - D-47877 Willich  
fon +49-(0)2154-8162.0 - fax +49-(0)2154-8162.499  
e-mail info.miw@motracindustries.com  
internet www.motracindustries.com

IZ-670-450-00

(subject to change)



## Ordering example:

SR3Z - 10A - B VL C  
| | | | |  
**A** **B** **C** **D** **E**

## Model code:

- |  |   |
|--|---|
| <b>A</b> <b>design</b><br>flow regulator valve<br>with mounting interface DIN 24340 form A<br>sandwichplate design | <b>C</b> <b>function mode</b><br>B = in B acting (supply flow)                |
| <b>B</b> <b>size and material</b><br>10A = aluminum (F37)<br>10S = steel (9SMnPb28K resp. GGG-40)                  | <b>D</b> <b>throttle valve</b><br>VL = FCVL-10.-..                            |
|  | <b>E</b> <b>adjustment</b><br>S = screw adjustment<br>C = cap<br>K = handknob |

## Technical Data:

<b>nominal pressure:</b>	350 bar (S) 250 bar (A)
<b>nominal flow:</b>	68 l/min
<b>weight:</b>	2.2 / 4.2 kg (A/S)
<b>logic element valve:</b>	LCEF-10.-A-F-0-100 see datasheet no. <a href="#">CD-210-101-00</a>
<b>throttle check valve:</b>	FCVL-10.-.. see datasheet no. <a href="#">CF-100-101-00</a>
<b>seals:</b>	included: 5 pcs. O-ring 12.42 x 1.78